



**ALPRO d.o.o.**

Jama 12, 1234 Mengeš

E-mail: [info@alpro-menges.si](mailto:info@alpro-menges.si)

Tel.: +386 (1) 562 39 00

Fax.: +386 (1) 562 39 05

**CENIK**

**2020**

Pridržujemo si pravico do popravka eventualnih napak v ceniku!

Cenik velja od 16. 03. 2020.

Vse cene so brez DDV in so v veljavi do preklica. Če bomo pravočasno obveščeni o spremembah cen s strani dobaviteljev, bo vsaka sprememba pravočasno najavljena v obvestilih na naši spletni strani. V nasprotnem si pridržujemo pravico do spremembe cen brez predhodne najave.

## 1 PP CEVI-Temperatura do 90°C-CEVI Z VGRAJENIMI TESNILI

| ŠIFRA | NAZIV BLAGA       | EM  | EUR/kos | EAN KODA      |
|-------|-------------------|-----|---------|---------------|
| 31005 | HTEM 32 X 250 mm  | kos | 0,83    | 3831008502015 |
| 31010 | HTEM 32 X 500 mm  | kos | 1,36    | 3831008502022 |
| 31015 | HTEM 32 X 1000 mm | kos | 2,24    | 3831008502039 |
| 31020 | HTEM 32 X 1500 mm | kos | 3,22    | 3831008502046 |
| 31025 | HTEM 32 X 2000 mm | kos | 4,17    | 3831008502053 |
| 31035 | HTEM 32 X 3000 mm | kos | 5,40    | 3831008502077 |

|       |                   |     |      |               |
|-------|-------------------|-----|------|---------------|
| 31105 | HTEM 40 X 250 mm  | kos | 0,81 | 3831008504019 |
| 31110 | HTEM 40 X 500 mm  | kos | 1,24 | 3831008504026 |
| 31115 | HTEM 40 X 1000 mm | kos | 2,23 | 3831008504033 |
| 31120 | HTEM 40 X 1500 mm | kos | 3,16 | 3831008504040 |
| 31125 | HTEM 40 X 2000 mm | kos | 3,93 | 3831008504057 |
| 31135 | HTEM 40 X 3000 mm | kos | 5,63 | 3831008504071 |

|       |                   |     |      |               |
|-------|-------------------|-----|------|---------------|
| 31205 | HTEM 50 X 250 mm  | kos | 1,10 | 3831008501018 |
| 31210 | HTEM 50 X 500 mm  | kos | 1,63 | 3831008501025 |
| 31215 | HTEM 50 X 1000 mm | kos | 2,67 | 3831008501032 |
| 31220 | HTEM 50 X 1500 mm | kos | 3,83 | 3831008501049 |
| 31225 | HTEM 50 X 2000 mm | kos | 4,85 | 3831008501056 |
| 31230 | HTEM 50 X 2500 mm | kos | 5,87 | 3831008501087 |
| 31235 | HTEM 50 X 3000 mm | kos | 7,10 | 3831008501070 |
| 31240 | HTEM 50 X 4000 mm | kos | 8,43 | 3831008501063 |

|       |                   |     |       |               |
|-------|-------------------|-----|-------|---------------|
| 31305 | HTEM 75 X 250 mm  | kos | 1,76  | 3831008503012 |
| 31310 | HTEM 75 X 500 mm  | kos | 2,42  | 3831008503029 |
| 31315 | HTEM 75 X 1000 mm | kos | 3,86  | 3831008503036 |
| 31320 | HTEM 75 X 1500 mm | kos | 6,13  | 3831008503043 |
| 31325 | HTEM 75 X 2000 mm | kos | 6,70  | 3831008503050 |
| 31330 | HTEM 75 X 2500 mm | kos | 8,30  | 3831008503067 |
| 31335 | HTEM 75 X 3000 mm | kos | 10,65 | 3831008503074 |
| 31340 | HTEM 75 X 4000 mm | kos | 12,96 | 3831008503081 |

|       |                    |     |       |               |
|-------|--------------------|-----|-------|---------------|
| 31405 | HTEM 110 X 250 mm  | kos | 2,77  | 3831008500011 |
| 31410 | HTEM 110 X 500 mm  | kos | 4,21  | 3831008500028 |
| 31415 | HTEM 110 X 1000 mm | kos | 6,45  | 3831008500035 |
| 31420 | HTEM 110 X 1500 mm | kos | 9,77  | 3831008500042 |
| 31425 | HTEM 110 X 2000 mm | kos | 11,53 | 3831008500059 |
| 31427 | HTEM 110 X 2500 mm | kos | 15,49 | 3831008500066 |
| 31435 | HTEM 110 X 3000 mm | kos | 17,62 | 3831008500073 |
| 31440 | HTEM 110 X 4000 mm | kos | 24,21 | 3831008500080 |

|       |                    |     |       |               |
|-------|--------------------|-----|-------|---------------|
| 31505 | HTEM 125 X 250 mm  | kos | 4,45  | 3831008505016 |
| 31510 | HTEM 125 X 500 mm  | kos | 6,28  | 3831008505023 |
| 31515 | HTEM 125 X 1000 mm | kos | 9,79  | 3831008505030 |
| 31520 | HTEM 125 X 1500 mm | kos | 12,89 | 3831008505047 |
| 31525 | HTEM 125 X 2000 mm | kos | 15,79 | 3831008505054 |
| 31527 | HTEM 125 X 2500 mm | kos | 20,35 | 3831008505061 |
| 31535 | HTEM 125 X 3000 mm | kos | 24,82 | 3831008505078 |
| 31540 | HTEM 125 X 4000 mm | kos | 32,99 | 3831008505085 |



| ŠIFRA | NAZIV BLAGA        | EM  | EUR/kos | EAN KODA      |
|-------|--------------------|-----|---------|---------------|
| 31605 | HTEM 160 X 250 mm  | kos | 7,76    | 3831008507010 |
| 31610 | HTEM 160 X 500 mm  | kos | 10,27   | 3831008507027 |
| 31615 | HTEM 160 X 1000 mm | kos | 16,12   | 3831008507034 |
| 31620 | HTEM 160 X 1500 mm | kos | 23,31   | 3831008507041 |
| 31625 | HTEM 160 X 2000 mm | kos | 26,94   | 3831008507058 |
| 31627 | HTEM 160 X 2500 mm | kos | 33,23   | 3831008507065 |
| 31635 | HTEM 160 X 3000 mm | kos | 39,55   | 3831008507072 |
| 31645 | HTEM 160 X 4000 mm | kos | 54,59   | 3831008507089 |

## 1.1 PP SPOJNIELEMENTI s tesnili

| ŠIFRA | NAZIV BLAGA       | EM  | EUR/kos | EAN KODA      |
|-------|-------------------|-----|---------|---------------|
| 30000 | HTB koleno 32/15  | kos | 0,62    | 3831020500341 |
| 30002 | HTB koleno 32/30  | kos | 0,62    | 3831020500358 |
| 30004 | HTB koleno 32/45  | kos | 0,62    | 3831020500716 |
| 30010 | HTB koleno 40/15  | kos | 0,62    | 3831020500761 |
| 30012 | HTB koleno 40/30  | kos | 0,62    | 3831020500778 |
| 30014 | HTB koleno 40/45  | kos | 0,62    | 3831020500785 |
| 30020 | HTB koleno 50/15  | kos | 0,73    | 3831020500815 |
| 30022 | HTB koleno 50/30  | kos | 0,73    | 3831020500822 |
| 30024 | HTB koleno 50/45  | kos | 0,73    | 3831020500839 |
| 30030 | HTB koleno 75/15  | kos | 2,47    | 3831020500372 |
| 30032 | HTB koleno 75/30  | kos | 2,47    | 3831020500389 |
| 30034 | HTB koleno 75/45  | kos | 1,42    | 3831020500860 |
| 30040 | HTB koleno 110/15 | kos | 2,40    | 3831020500914 |
| 30042 | HTB koleno 110/30 | kos | 2,40    | 3831020500921 |
| 30044 | HTB koleno 110/45 | kos | 2,40    | 3831020500938 |
| 30054 | HTB koleno 125/15 | kos | 11,76   | 3831020500983 |
| 30056 | HTB koleno 125/30 | kos | 11,76   | 3831020500990 |
| 30050 | HTB koleno 125/45 | kos | 4,46    | 3831020500969 |
| 30064 | HTB koleno 160/15 | kos | 17,27   | 3831020501034 |
| 30066 | HTB koleno 160/30 | kos | 17,27   | 3831020501041 |
| 30060 | HTB koleno 160/45 | kos | 7,16    | 3831020501010 |
| 30006 | HTB koleno 32/67  | kos | 0,62    | 3831020500365 |
| 30008 | HTB koleno 32/90  | kos | 0,62    | 3831020500723 |
| 30016 | HTB koleno 40/67  | kos | 0,62    | 3831020500792 |
| 30018 | HTB koleno 40/90  | kos | 0,62    | 3831020500808 |
| 30026 | HTB koleno 50/67  | kos | 0,73    | 3831020500846 |
| 30028 | HTB koleno 50/90  | kos | 0,73    | 3831020500853 |
| 30036 | HTB koleno 75/67  | kos | 2,47    | 3831020500396 |
| 30038 | HTB koleno 75/90  | kos | 1,42    | 3831020500877 |
| 30046 | HTB koleno 110/67 | kos | 2,40    | 3831020500945 |
| 30048 | HTB koleno 110/90 | kos | 2,40    | 3831020500952 |
| 30052 | HTB koleno 125/90 | kos | 4,46    | 3831020500976 |
| 30062 | HTB koleno 160/90 | kos | 7,16    | 3831020501027 |



|       |                     |     |      |               |
|-------|---------------------|-----|------|---------------|
| 30144 | HTR redukcija 40/32 | kos | 0,82 | 3831020501898 |
| 30146 | HTR redukcija 50/32 | kos | 0,82 | 3831020501904 |

| ŠIFRA | NAZIV BLAGA           | EM  | EUR/kos     | EAN KODA      |
|-------|-----------------------|-----|-------------|---------------|
| 30148 | HTR redukcija 50/40   | kos | <b>0,82</b> | 3831020501911 |
| 30150 | HTR redukcija 75/50   | kos | <b>1,15</b> | 3831020501928 |
| 30152 | HTR redukcija 110/50  | kos | <b>1,63</b> | 3831020501942 |
| 30154 | HTR redukcija 110/75  | kos | <b>1,63</b> | 3831020501959 |
| 30156 | HTR redukcija 125/110 | kos | <b>2,44</b> | 3831020501980 |
| 30158 | HTR redukcija 160/110 | kos | <b>3,64</b> | 3831020502017 |
| 30160 | HTR redukcija 160/125 | kos | <b>3,92</b> | 3831020502024 |



|       |                      |     |             |               |
|-------|----------------------|-----|-------------|---------------|
| 30172 | HTU drsna spojka 32  | kos | <b>0,97</b> | 3831020502123 |
| 30174 | HTU drsna spojka 40  | kos | <b>0,97</b> | 3831020502130 |
| 30176 | HTU drsna spojka 50  | kos | <b>1,02</b> | 3831020502147 |
| 30178 | HTU drsna spojka 75  | kos | <b>1,58</b> | 3831020502154 |
| 30180 | HTU drsna spojka 110 | kos | <b>2,40</b> | 3831020502161 |
| 30182 | HTU drsna spojka 125 | kos | <b>5,29</b> | 3831020502178 |
| 30184 | HTU drsna spojka 160 | kos | <b>8,02</b> | 3831020502192 |



|       |                       |     |              |               |
|-------|-----------------------|-----|--------------|---------------|
| 30068 | HTEA odcep 32/32/45   | kos | <b>1,36</b>  | 3831020501119 |
| 30072 | HTEA odcep 40/40/45   | kos | <b>1,29</b>  | 3831020501140 |
| 30096 | HTEA odcep 50/40/45   | kos | <b>2,06</b>  | 3831020501324 |
| 30076 | HTEA odcep 50/50/45   | kos | <b>1,40</b>  | 3831020501171 |
| 30100 | HTEA odcep 75/50/45   | kos | <b>2,18</b>  | 3831020501348 |
| 30080 | HTEA odcep 75/75/45   | kos | <b>2,27</b>  | 3831020501201 |
| 30108 | HTEA odcep 110/50/45  | kos | <b>2,78</b>  | 3831020501379 |
| 30112 | HTEA odcep 110/75/45  | kos | <b>3,77</b>  | 3831020501409 |
| 30084 | HTEA odcep 110/110/45 | kos | <b>4,11</b>  | 3831020501232 |
| 30116 | HTEA odcep 125/110/45 | kos | <b>8,66</b>  | 3831020501430 |
| 30088 | HTEA odcep 125/125/45 | kos | <b>8,66</b>  | 3831020501263 |
| 30120 | HTEA odcep 160/110/45 | kos | <b>12,34</b> | 3831020501461 |
| 30124 | HTEA odcep 160/125/45 | kos | <b>13,72</b> | 3831020501485 |
| 30092 | HTEA odcep 160/160/45 | kos | <b>14,46</b> | 3831020501294 |
| 30070 | HTEA odcep 32/32/90   | kos | <b>1,37</b>  | 3831020501126 |
| 30074 | HTEA odcep 40/40/90   | kos | <b>1,29</b>  | 3831020501157 |
| 30098 | HTEA odcep 50/40/90   | kos | <b>2,91</b>  | 3831020501331 |
| 30078 | HTEA odcep 50/50/90   | kos | <b>1,40</b>  | 3831020501188 |
| 30102 | HTEA odcep 75/50/90   | kos | <b>2,18</b>  | 3831020501355 |
| 30082 | HTEA odcep 75/75/90   | kos | <b>2,27</b>  | 3831020501218 |
| 30110 | HTEA odcep 110/50/90  | kos | <b>2,76</b>  | 3831020501386 |
| 30114 | HTEA odcep 110/75/90  | kos | <b>3,77</b>  | 3831020501409 |
| 30086 | HTEA odcep 110/110/90 | kos | <b>4,11</b>  | 3831020501249 |
| 30118 | HTEA odcep 125/110/90 | kos | <b>8,66</b>  | 3831020501447 |
| 30090 | HTEA odcep 125/125/90 | kos | <b>8,66</b>  | 3831020501270 |
| 30122 | HTEA odcep 160/110/90 | kos | <b>12,34</b> | 3831020501478 |
| 30126 | HTEA odcep 160/125/90 | kos | <b>13,72</b> | 3831020501492 |
| 30094 | HTEA odcep 160/160/90 | kos | <b>14,46</b> | 3831020501300 |



|       |                  |     |             |               |
|-------|------------------|-----|-------------|---------------|
| 30162 | HTRE revizija 50 | kos | <b>2,34</b> | 3831020502062 |
| 30164 | HTRE revizija 75 | kos | <b>3,10</b> | 3831020502079 |



| ŠIFRA | NAZIV BLAGA       | EM  | EUR/kos | EAN KODA      |
|-------|-------------------|-----|---------|---------------|
| 30166 | HTRE revizija 110 | kos | 4,32    | 3831020502086 |
| 30168 | HTRE revizija 125 | kos | 10,92   | 3831020502093 |
| 30170 | HTRE revizija 160 | kos | 15,29   | 3831020502109 |



|       |                         |     |       |               |
|-------|-------------------------|-----|-------|---------------|
| 30194 | KADH vent.odzr.kapa 50  | kos | 8,97  | 3831020502215 |
| 30196 | KADH vent.odzr.kapa 75  | kos | 8,97  | 3831020502222 |
| 30198 | KADH vent.odzr.kapa 110 | Kos | 12,49 | 3831020502239 |
| 32718 | KADH vent.odzr.kapa 125 | kos | 21,65 | 3831037901964 |
| 32719 | KADH vent.odzr.kapa 160 | kos | 26,73 | 3831037901971 |



|       |              |     |      |               |
|-------|--------------|-----|------|---------------|
| 32826 | GPtesnilo 32 | kos | 0,12 | 3830021991127 |
| 32827 | GPtesnilo 40 | kos | 0,12 | 3830021991103 |
| 32828 | GPtesnilo 50 | kos | 0,12 | 3830021991141 |
| 32829 | GPtesnilo 75 | kos | 0,17 | 3830021991165 |
| 32830 | GPtesnilo110 | kos | 0,26 | 3830021991189 |
| 32831 | GPtesnilo125 | kos | 0,47 | 3830021991202 |
| 32832 | GPtesnilo160 | kos | 0,57 | 3830021991226 |



|       |                       |     |       |               |
|-------|-----------------------|-----|-------|---------------|
| 32816 | MASTzatesnila 250gr   | kos | 7,04  | 3830024952422 |
| 32821 | MAST za tesnila 2 kg. | kg  | 20,10 | 3830045466588 |



|       |                   |     |      |               |
|-------|-------------------|-----|------|---------------|
| 32796 | GSB tesnilo 50/32 | kos | 1,14 | 3830021991240 |
| 32798 | GSB tesnilo 50/40 | kos | 1,14 | 3830021991264 |

|       |                                |     |       |               |
|-------|--------------------------------|-----|-------|---------------|
| 32800 | WCtesnilozaWCpriključek110     | kos | 7,42  | 3830021991288 |
| 32804 | WC tesnilo IDEAL               | kos | 4,62  | 3830021991349 |
| 32802 | WCtesniloart.03                | kos | 6,82  | 3830017025577 |
| 32803 | WC tesnilo art.04 EKC          | kos | 7,23  | 3830017025584 |
| 32806 | WC tesnilo UNIVERZAL           | kos | 4,61  | 3830021991363 |
| 32760 | WCpriključek 110               | kos | 7,24  | 3831037901698 |
| 30252 | Koleno z odcepom L. 110/50     | kos | 21,08 | 3831020501607 |
| 30254 | Koleno z odcepom D. 110/50     | kos | 21,08 | 3831020508750 |
| 32758 | Koleno z odcepom zadaj 110/50/ | kos | 21,08 | 3831020501577 |



|       |                 |     |      |               |
|-------|-----------------|-----|------|---------------|
| 30222 | SLsifonskilok50 | kos | 2,41 | 3831020501089 |
| 30220 | SLsifonskilok40 | kos | 2,06 | 3831020501065 |

|       |                              |     |       |               |
|-------|------------------------------|-----|-------|---------------|
| 30128 | HTDA dv.odcep 50/50/50/45    | kos | 10,40 | 3831020506701 |
| 30130 | HTDA dv.odcep 50/50/50/90    | kos | 10,40 | 3831020506718 |
| 30132 | HTDA dv.odcep 75/75/75/45    | kos | 12,70 | 3831020506749 |
| 30134 | HTDA dv.odcep 75/75/75/90    | kos | 12,70 | 3831020506756 |
| 30136 | HTDA dv.odcep 110/50/50/45   | kos | 11,92 | 3831020506794 |
| 30138 | HTDA dv.odcep 110/50/50/90   | kos | 11,92 | 3831020506800 |
| 30140 | HTDA dv.odcep 110/110/110/45 | kos | 14,07 | 3831020504202 |
| 30142 | HTDA dv.odcep 110/110/110/90 | kos | 14,07 | 3831020506855 |



| ŠIFRA | NAZIV BLAGA | EM  | EUR/kos     | EAN KODA      |
|-------|-------------|-----|-------------|---------------|
| 30200 | HTM čep 32  | kos | <b>0,42</b> | 3831020502246 |
| 30202 | HTM čep 40  | kos | <b>0,42</b> | 3831020502253 |
| 30204 | HTM čep 50  | kos | <b>0,42</b> | 3831020502260 |
| 30206 | HTM čep 75  | kos | <b>0,64</b> | 3831020502277 |
| 30208 | HTM čep 110 | kos | <b>0,77</b> | 3831020502284 |
| 30210 | HTM čep 125 | kos | <b>1,10</b> | 3831020502291 |
| 30212 | HTM čep 160 | kos | <b>1,61</b> | 3831020502307 |



## 2 UKC PVC CEVI SN 4, SN 8 (KOEX), po EN 13476

| ŠIFRA | NAZIV BLAGA                | EM  | EUR/kos      | EAN KODA      |
|-------|----------------------------|-----|--------------|---------------|
| 37038 | UKC CEV 110 X 500 mm SN 4  | kos | <b>5,53</b>  | 3831008573015 |
| 37041 | UKC CEV 110 X 1000 mm SN 4 | kos | <b>7,02</b>  | 3831008573022 |
| 37044 | UKC CEV 110 X 3000 mm SN 4 | kos | <b>18,62</b> | 3831055708286 |
| 37051 | UKC CEV 110 X 5000 mm SN 4 | kos | <b>29,67</b> | 3831008573060 |

|       |                            |     |              |               |
|-------|----------------------------|-----|--------------|---------------|
| 37046 | UKC CEV 125 X 500 mm SN 4  | kos | <b>6,65</b>  | 3831008575019 |
| 37055 | UKC CEV 125 X 1000 mm SN 4 | kos | <b>9,46</b>  | 3831008575026 |
| 37076 | UKC CEV 125 X 3000 mm SN 4 | kos | <b>21,04</b> | 3831008575040 |
| 37057 | UKC CEV 125 X 5000 mm SN 4 | kos | <b>33,72</b> | 3831008575064 |

|       |                            |     |              |               |
|-------|----------------------------|-----|--------------|---------------|
| 37059 | UKC CEV 160 X 500 mm SN 4  | kos | <b>9,16</b>  | 3831008577013 |
| 37063 | UKC CEV 160 X 1000 mm SN 4 | kos | <b>11,07</b> | 3831055705919 |
| 37065 | UKC CEV 160 X 2000 mm SN 4 | kos | <b>21,49</b> | 3831055705902 |
| 37066 | UKC CEV 160 X 3000 mm SN 4 | kos | <b>30,21</b> | 3831055705872 |
| 37070 | UKC CEV 160 X 5000 mm SN 4 | kos | <b>48,81</b> | 3831055705896 |

|       |                            |     |              |               |
|-------|----------------------------|-----|--------------|---------------|
| 37009 | UKC CEV 200 X 500 mm SN 4  | kos | <b>11,06</b> | 3830045469411 |
| 37100 | UKC CEV 200 X 1000 mm SN 4 | kos | <b>16,11</b> | 3831055707357 |
| 37105 | UKC CEV 200 X 2000 mm SN 4 | kos | <b>31,23</b> | 3831055707364 |
| 37107 | UKC CEV 200 X 3000 mm SN 4 | kos | <b>44,29</b> | 3831055707371 |
| 37110 | UKC CEV 200 X 5000 mm SN 4 | kos | <b>70,97</b> | 3831055711484 |

|       |                            |     |               |               |
|-------|----------------------------|-----|---------------|---------------|
| 37120 | UKC CEV 250 X 1000 mm SN 4 | kos | <b>25,93</b>  | 3831055707302 |
| 37125 | UKC CEV 250 X 2000 mm SN 4 | kos | <b>48,28</b>  | 3831055707319 |
| 37127 | UKC CEV 250 X 3000 mm SN 4 | kos | <b>71,97</b>  | 3831055707296 |
| 37130 | UKC CEV 250 X 5000 mm SN 4 | kos | <b>109,72</b> | 3831055707289 |

|       |                            |     |               |               |
|-------|----------------------------|-----|---------------|---------------|
| 37135 | UKC CEV 315 X 1000 mm SN 4 | kos | <b>40,76</b>  | 3831055707142 |
| 37140 | UKC CEV 315 X 2000 mm SN 4 | kos | <b>77,19</b>  | 3831055707159 |
| 37142 | UKC CEV 315 X 3000 mm SN 4 | kos | <b>109,72</b> | 3831055707166 |
| 37150 | UKC CEV 315 X 5000 mm SN 4 | kos | <b>175,41</b> | 3831055707173 |

|       |                            |     |               |               |
|-------|----------------------------|-----|---------------|---------------|
| 37155 | UKC CEV 400 X 1000 mm SN 4 | kos | <b>70,15</b>  | 3831055707197 |
| 37160 | UKC CEV 400 X 2000 mm SN 4 | kos | <b>121,82</b> | 3831055707203 |
| 37162 | UKC CEV 400 X 3000 mm SN 4 | kos | <b>183,80</b> | 3831055707234 |
| 37165 | UKC CEV 400 X 5000 mm SN 4 | kos | <b>276,85</b> | 3831055707210 |



| ŠIFRA | NAZIV BLAGA                | EM  | EUR/kos       | EAN KODA      |
|-------|----------------------------|-----|---------------|---------------|
| 37170 | UKC CEV 500 X 1000 mm SN 4 | kos | <b>118,75</b> | 3831055702130 |
| 37177 | UKC CEV 500 X 3000 mm SN 4 | kos | <b>310,74</b> | 3831055700075 |
| 37180 | UKC CEV 500 X 5000 mm SN 4 | kos | <b>461,98</b> | 3831055702116 |

|       |                            |     |              |               |
|-------|----------------------------|-----|--------------|---------------|
| 37204 | UKC CEV 160 X 1000 mm SN 8 | kos | <b>12,95</b> | 3831055711613 |
| 37203 | UKC CEV 160 X 3000 mm SN 8 | kos | <b>34,79</b> | 3831055701621 |
| 37209 | UKC CEV 160 X 5000 mm SN 8 | kos | <b>55,84</b> | 3831055701638 |

|       |                            |     |              |               |
|-------|----------------------------|-----|--------------|---------------|
| 37210 | UKC CEV 200 X 1000 mm SN 8 | kos | <b>18,63</b> | 3831055702277 |
| 37215 | UKC CEV 200 X 3000 mm SN 8 | kos | <b>52,61</b> | 3831055701263 |
| 37220 | UKC CEV 200 X 5000 mm SN 8 | kos | <b>84,69</b> | 3831055700433 |

|       |                            |     |               |               |
|-------|----------------------------|-----|---------------|---------------|
| 37225 | UKC CEV 250 X 1000 mm SN 8 | kos | <b>34,06</b>  | 3831055709658 |
| 37227 | UKC CEV 250 X 3000 mm SN 8 | kos | <b>85,07</b>  | 3831055700600 |
| 37228 | UKC CEV 250 X 5000 mm SN 8 | kos | <b>130,60</b> | 3831055700440 |

|       |                            |     |               |               |
|-------|----------------------------|-----|---------------|---------------|
| 37234 | UKC CEV 315 X 1000 mm SN 8 | kos | <b>49,85</b>  | 3831055700297 |
| 37236 | UKC ECV 315 X 3000 mm SN 8 | kos | <b>130,39</b> | 3831055700594 |
| 37237 | UKC CEV 315 X 5000 mm SN 8 | kos | <b>208,89</b> | 3831055700732 |

|       |                            |     |               |               |
|-------|----------------------------|-----|---------------|---------------|
| 37243 | UKC CEV 400 X 1000 mm SN 8 | kos | <b>83,61</b>  | 3831055700716 |
| 37244 | UKC CEV 400 X 3000 mm SN 8 | kos | <b>239,51</b> | 3831055700969 |
| 37245 | UKC CEV 400 X 5000 mm SN 8 | kos | <b>388,60</b> | 3831055700457 |

|       |                            |     |               |               |
|-------|----------------------------|-----|---------------|---------------|
| 37246 | UKC CEV 500 X 1000 mm SN 8 | kos | <b>128,77</b> | 3831055700976 |
| 37247 | UKC CEV 500 X 5000 mm SN 8 | kos | <b>596,85</b> | 3831055700464 |

## 2.1 UKCPVCCEVISN4,SN8(enoslojne),poEN1401-1

| ŠIFRA | NAZIV BLAGA                | EM  | EUR/kos      | EAN KODA      |
|-------|----------------------------|-----|--------------|---------------|
| 37064 | UKC CEV 160 X 1000 mm SN 4 | kos | <b>11,07</b> | 3830045460319 |
| 37068 | UKC CEV 160 X 2000 mm SN 4 | kos | <b>21,49</b> | 3830045460326 |
| 37067 | UKC CEV 160 X 3000 mm SN 4 | kos | <b>30,21</b> | 3830045460333 |
| 37077 | UKC CEV 160 X 4000 mm SN 4 | kos | <b>41,27</b> | 3831008577051 |
| 37071 | UKC CEV 160 X 5000 mm SN 4 | kos | <b>48,81</b> | 3830045460340 |

|       |                            |     |              |               |
|-------|----------------------------|-----|--------------|---------------|
| 37101 | UKC CEV 200 X 1000 mm SN 4 | kos | <b>16,62</b> | 3830045460364 |
| 37106 | UKC CEV 200 X 2000 mm SN 4 | kos | <b>32,22</b> | 3830045460371 |
| 37108 | UKC CEV 200 X 3000 mm SN 4 | kos | <b>46,30</b> | 3830045460388 |
| 31104 | UKC CEV 200 X 4000 mm SN 4 | kos | <b>59,51</b> | 3831008579031 |
| 37111 | UKC CEV 200 X 5000 mm SN 4 | kos | <b>74,75</b> | 3830045460395 |

|       |                            |     |               |               |
|-------|----------------------------|-----|---------------|---------------|
| 37121 | UKC CEV 250 X 1000 mm SN 4 | kos | <b>26,93</b>  | 3830045460418 |
| 37126 | UKC CEV 250 X 3000 mm SN 4 | kos | <b>75,25</b>  | 3830045460432 |
| 37131 | UKC CEV 250 X 5000 mm SN 4 | kos | <b>119,50</b> | 3830045460449 |

|       |                            |     |               |               |
|-------|----------------------------|-----|---------------|---------------|
| 37136 | UKC CEV 315 X 1000 mm SN 4 | kos | <b>42,54</b>  | 3830045460517 |
| 37143 | UKC CEV 315 X 3000 mm SN 4 | kos | <b>114,77</b> | 3830045460531 |
| 37151 | UKC CEV 315 X 5000 mm SN 4 | kos | <b>183,22</b> | 3830045460548 |





| ŠIFRA | NAZIV BLAGA                | EM  | EUR/kos       | EAN KODA      |
|-------|----------------------------|-----|---------------|---------------|
| 37156 | UKC CEV 400 X 1000 mm SN 4 | kos | <b>73,81</b>  | 3830045460549 |
| 37163 | UKC CEV 400 X 3000 mm SN 4 | kos | <b>193,28</b> | 3830045460593 |
| 37166 | UKC CEV 400 X 5000 mm SN 4 | kos | <b>290,38</b> | 3830045460609 |

|       |                            |     |               |               |
|-------|----------------------------|-----|---------------|---------------|
| 37171 | UKC CEV 500 X 1000 mm SN 4 | kos | <b>124,78</b> | 3830045460616 |
| 37181 | UKC CEV 500 X 5000 mm SN 4 | kos | <b>485,72</b> | 3830045460630 |

|       |                            |     |              |               |
|-------|----------------------------|-----|--------------|---------------|
| 37206 | UKC CEV 160 X 1000 mm SN 8 | kos | <b>12,95</b> | 3830045460678 |
| 37207 | UKC CEV 160 X 3000 mm SN 8 | kos | <b>34,79</b> | 3830045460685 |
| 37208 | UKC CEV 160 X 5000 mm SN 8 | kos | <b>55,84</b> | 3830045460692 |

|       |                            |     |              |               |
|-------|----------------------------|-----|--------------|---------------|
| 37211 | UKC CEV 200 X 1000 mm SN 8 | kos | <b>20,51</b> | 3830045460715 |
| 37212 | UKC CEV 200 X 3000 mm SN 8 | kos | <b>56,90</b> | 3830045460722 |
| 37221 | UKC CEV 200 X 5000 mm SN 8 | kos | <b>91,16</b> | 3830045460739 |

|       |                            |     |               |               |
|-------|----------------------------|-----|---------------|---------------|
| 37226 | UKC CEV 250 X 1000 mm SN 8 | kos | <b>36,72</b>  | 3830045460753 |
| 37231 | UKC CEV 250 X 3000 mm SN 8 | kos | <b>91,70</b>  | 3830045460760 |
| 37229 | UKC CEV 250 X 5000 mm SN 8 | kos | <b>140,21</b> | 3830045460777 |

|       |                            |     |               |               |
|-------|----------------------------|-----|---------------|---------------|
| 37233 | UKC CEV 315 X 1000 mm SN 8 | kos | <b>53,93</b>  | 3830045460791 |
| 37232 | UKC ECV 315 X 3000 mm SN 8 | kos | <b>140,21</b> | 3830045460807 |
| 37238 | UKC CEV 315 X 5000 mm SN 8 | kos | <b>223,30</b> | 3830045460814 |

|       |                            |     |               |               |
|-------|----------------------------|-----|---------------|---------------|
| 37240 | UKC CEV 400 X 1000 mm SN 8 | kos | <b>95,73</b>  | 3830045460821 |
| 37241 | UKC CEV 400 X 3000 mm SN 8 | kos | <b>273,35</b> | 3830045460838 |
| 37242 | UKC CEV 400 X 5000 mm SN 8 | kos | <b>442,50</b> | 3830045460845 |

|       |                            |     |               |               |
|-------|----------------------------|-----|---------------|---------------|
| 37248 | UKC CEV 500 X 5000 mm SN 8 | kos | <b>655,69</b> | 3830045460852 |
|-------|----------------------------|-----|---------------|---------------|



## 2.2 PVC UKC spojni kosi

| ŠIFRA | NAZIV BLAGA      | EM  | EUR/kos     | EAN KODA      |
|-------|------------------|-----|-------------|---------------|
| 37298 | KolenoKGB 110/15 | kos | <b>6,96</b> | 3830045466403 |
| 37292 | KolenoKGB 110/30 | kos | <b>6,96</b> | 3830045466410 |
| 37299 | KolenoKGB 110/45 | kos | <b>6,96</b> | 3830021993978 |
| 37300 | KolenoKGB 110/90 | kos | <b>6,96</b> | 3830021993992 |



|       |                  |     |             |               |
|-------|------------------|-----|-------------|---------------|
| 37295 | KolenoKGB 125/15 | kos | <b>7,64</b> | 3830045466380 |
| 37294 | KolenoKGB 125/30 | kos | <b>7,64</b> | 3830045466373 |
| 37296 | KolenoKGB 125/45 | kos | <b>7,64</b> | 3830021994012 |
| 37297 | KolenoKGB 125/90 | kos | <b>7,64</b> | 3830021994036 |



|       |                  |     |             |               |
|-------|------------------|-----|-------------|---------------|
| 37301 | KolenoKGB 160/15 | kos | <b>8,28</b> | 3830021994050 |
| 37303 | KolenoKGB 160/30 | kos | <b>8,28</b> | 3830021994074 |
| 37305 | KolenoKGB 160/45 | kos | <b>8,28</b> | 3830021994098 |
| 37307 | KolenoKGB 160/67 | kos | <b>8,28</b> | 3830021994111 |
| 37309 | KolenoKGB 160/90 | kos | <b>8,28</b> | 3830021994135 |



| ŠIFRA | NAZIV BLAGA      | EM  | EUR/kos      | EAN KODA      |
|-------|------------------|-----|--------------|---------------|
| 37311 | KolenoKGB 200/15 | kos | <b>16,37</b> | 3830021994159 |
| 37313 | KolenoKGB 200/30 | kos | <b>16,37</b> | 3830021994173 |
| 37315 | KolenoKGB 200/45 | kos | <b>16,37</b> | 3830021993985 |
| 37317 | KolenoKGB 200/67 | kos | <b>18,04</b> | 3830021994005 |
| 37319 | KolenoKGB 200/87 | kos | <b>19,37</b> | 3830021994081 |

|       |                  |     |              |               |
|-------|------------------|-----|--------------|---------------|
| 37321 | KolenoKGB 250/15 | kos | <b>43,17</b> | 3830021994197 |
| 37323 | KolenoKGB 250/30 | kos | <b>43,17</b> | 3830021994210 |
| 37325 | KolenoKGB 250/45 | kos | <b>38,53</b> | 3830021994029 |
| 37329 | KolenoKGB 250/87 | kos | <b>46,94</b> | 3830021994104 |

|       |                  |     |              |               |
|-------|------------------|-----|--------------|---------------|
| 37340 | KolenoKGB 315/15 | kos | <b>66,49</b> | 3830021994258 |
| 37333 | KolenoKGB 315/30 | kos | <b>66,49</b> | 3830021994272 |
| 37335 | KolenoKGB 315/45 | kos | <b>64,17</b> | 3830021994043 |
| 37339 | KolenoKGB 315/87 | kos | <b>78,18</b> | 3830021994128 |

|       |                  |     |               |               |
|-------|------------------|-----|---------------|---------------|
| 37344 | KolenoKGB 400/15 | kos | <b>174,82</b> | 3830021994296 |
| 37343 | KolenoKGB 400/30 | kos | <b>181,82</b> | 3830021994319 |
| 37345 | KolenoKGB 400/45 | kos | <b>181,82</b> | 3830021994067 |
| 37349 | KolenoKGB 400/87 | kos | <b>210,51</b> | 3830021994142 |

|       |                       |     |             |               |
|-------|-----------------------|-----|-------------|---------------|
| 37375 | Odcep KGEA 110/110/45 | kos | <b>7,58</b> | 3830045464249 |
| 37369 | Odcep KGEA 110/110/90 | kos | <b>7,58</b> | 3830021994333 |

|       |                       |     |              |               |
|-------|-----------------------|-----|--------------|---------------|
| 37372 | Odcep KGEA 125/125/45 | kos | <b>11,54</b> | 3830021994371 |
| 37376 | Odcep KGEA 125/125/90 | kos | <b>13,39</b> | 3830045465475 |
| 37367 | Odcep KGEA 125/110/45 | kos | <b>10,45</b> | 3830021994357 |
| 37380 | Odcep KGEA 125/110/90 | kos | <b>10,45</b> | 3830045467844 |

|       |                       |     |              |               |
|-------|-----------------------|-----|--------------|---------------|
| 37368 | Odcep KGEA 160/110/45 | kos | <b>12,82</b> | 3830021994395 |
| 37379 | Odcep KGEA 160/110/87 | kos | <b>12,82</b> | 3830021994418 |
| 37373 | Odcep KGEA 160/125/45 | kos | <b>14,01</b> | 3830021994432 |
| 37374 | Odcep KGEA 160/125/87 | kos | <b>14,01</b> | 3830021994142 |
| 37370 | Odcep KGEA 160/160/45 | kos | <b>16,13</b> | 3830021994470 |
| 37371 | Odcep KGEA 160/160/87 | kos | <b>16,13</b> | 3830021994494 |

|       |                       |     |              |               |
|-------|-----------------------|-----|--------------|---------------|
| 37405 | Odcep KGEA 200/110/45 | kos | <b>20,35</b> | 3830021994685 |
| 37409 | Odcep KGEA 200/110/87 | kos | <b>20,35</b> | 3830021994227 |
| 37415 | Odcep KGEA 200/125/45 | kos | <b>23,14</b> | 3830021994661 |
| 37419 | Odcep KGEA 200/125/87 | kos | <b>23,14</b> | 3830021994203 |
| 37425 | Odcep KGEA 200/160/45 | kos | <b>26,64</b> | 3830021994647 |
| 37429 | Odcep KGEA 200/160/87 | kos | <b>26,64</b> | 3830021994180 |
| 37435 | Odcep KGEA 200/200/45 | kos | <b>29,91</b> | 3830021994623 |
| 37439 | Odcep KGEA 200/200/87 | kos | <b>29,91</b> | 3830021994166 |

|       |                       |     |              |               |
|-------|-----------------------|-----|--------------|---------------|
| 37445 | Odcep KGEA 250/110/45 | kos | <b>46,74</b> | 3830021994517 |
| 37449 | Odcep KGEA 250/110/87 | kos | <b>46,74</b> | 3830021994531 |
| 37455 | Odcep KGEA 250/125/45 | kos | <b>49,23</b> | 3830021994555 |



| ŠIFRA | NAZIV BLAGA           | EM  | EUR/kos      | EAN KODA      |
|-------|-----------------------|-----|--------------|---------------|
| 37459 | Odcep KGEA 250/125/87 | kos | <b>49,23</b> | 3830021994579 |
| 37465 | Odcep KGEA 250/160/45 | kos | <b>56,70</b> | 3830021994746 |
| 37469 | Odcep KGEA 250/160/87 | kos | <b>56,70</b> | 3830021994289 |
| 37475 | Odcep KGEA 250/200/45 | kos | <b>65,59</b> | 3830021994722 |
| 37479 | Odcep KGEA 250/200/87 | kos | <b>65,59</b> | 3830021994265 |
| 37485 | Odcep KGEA 250/250/45 | kos | <b>84,03</b> | 3830021994708 |
| 37489 | Odcep KGEA 250/250/87 | kos | <b>84,03</b> | 3830021994241 |

|       |                       |     |               |               |
|-------|-----------------------|-----|---------------|---------------|
| 37495 | Odcep KGEA 315/110/45 | kos | <b>108,79</b> | 3830021994593 |
| 37499 | Odcep KGEA 315/110/87 | kos | <b>108,79</b> | 3830021994616 |
| 37505 | Odcep KGEA 315/125/45 | kos | <b>115,62</b> | 3830021994630 |
| 37509 | Odcep KGEA 315/125/87 | kos | <b>115,62</b> | 3830021994654 |
| 37515 | Odcep KGEA 315/160/45 | kos | <b>124,95</b> | 3830021994821 |
| 37519 | Odcep KGEA 315/160/87 | kos | <b>124,95</b> | 3830021994364 |
| 37525 | Odcep KGEA 315/200/45 | kos | <b>132,36</b> | 3830021994807 |
| 37529 | Odcep KGEA 315/200/87 | kos | <b>132,36</b> | 3830021994340 |
| 37535 | Odcep KGEA 315/250/45 | kos | <b>148,04</b> | 3830021994784 |
| 37539 | Odcep KGEA 315/250/87 | kos | <b>148,04</b> | 3830021994326 |
| 37545 | Odcep KGEA 315/315/45 | kos | <b>162,86</b> | 3830021994760 |
| 37549 | Odcep KGEA 315/315/87 | kos | <b>162,86</b> | 3830021994302 |

|       |                |     |               |               |
|-------|----------------|-----|---------------|---------------|
| 37723 | Spojka KGU 110 | kos | <b>5,10</b>   | 3830045466427 |
| 37724 | Spojka KGU 125 | kos | <b>6,18</b>   | 3830045462399 |
| 37725 | Spojka KGU 160 | kos | <b>6,85</b>   | 3830021994791 |
| 37730 | Spojka KGU 200 | kos | <b>13,01</b>  | 3830021994449 |
| 37735 | Spojka KGU 250 | kos | <b>37,65</b>  | 3830021994463 |
| 37740 | Spojka KGU 315 | kos | <b>56,42</b>  | 3830021994487 |
| 37745 | Spojka KGU 400 | kos | <b>161,33</b> | 3830021994500 |



|       |                       |     |              |               |
|-------|-----------------------|-----|--------------|---------------|
| 37797 | Redukcija KGR 125/110 | kos | <b>4,74</b>  | 3830045467707 |
| 37799 | Redukcija KGR 160/110 | kos | <b>5,36</b>  | 3830045467806 |
| 37798 | Redukcija KGR 160/125 | kos | <b>5,97</b>  | 3830045466397 |
| 37810 | Redukcija KGR 200/160 | kos | <b>10,63</b> | 3830021994869 |
| 37830 | Redukcija KGR 250/200 | kos | <b>33,36</b> | 3830021994920 |
| 37855 | Redukcija KGR 315/250 | kos | <b>70,92</b> | 3830021994982 |
| 37870 | Redukcija KGR 400/315 | kos | <b>86,25</b> | 3830045461552 |



|       |             |     |              |               |
|-------|-------------|-----|--------------|---------------|
| 37910 | Čep KGM 200 | kos | <b>5,56</b>  | 3830021995064 |
| 37915 | Čep KGM 250 | kos | <b>28,90</b> | 3830021995088 |
| 37920 | Čep KGM 315 | kos | <b>52,71</b> | 3830021994692 |
| 37925 | Čep KGM 400 | kos | <b>64,74</b> | 3830021994715 |

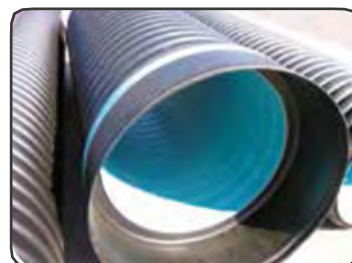


### 3 PErebraste cevi za ulično kanalizacijo - MAGNUM, MAPIKAN, STIKAN

| ŠIFRA | NAZIV BLAGA                        | EM  | EUR/kos | EAN KODA      |
|-------|------------------------------------|-----|---------|---------------|
| 34150 | PE KANAL. CEV 110 X 6000 mm SN - 8 | kos | 27,97   | 3831055701225 |
| 34154 | PE KANAL. CEV 160 X 6000 mm SN - 8 | kos | 69,23   | 3831055701232 |
| 34160 | PE KANAL. CEV 200 X 6000 mm SN - 4 | kos | 76,81   | 3831055701249 |
| 34162 | PE KANAL. CEV 200 X 6000 mm SN - 8 | kos | 95,19   | 3831055700662 |

|       |  |     |         |               |
|-------|--|-----|---------|---------------|
| 34805 | PE KANAL. CEV 250/218 X 6000 mm SN 4   | kos | 109,33  | 3830045460906 |
| 34807 | PE KANAL. CEV 315/272 X 6000 mm SN 4   | kos | 151,59  | 3830045460913 |
| 34809 | PE KANAL. CEV 400/347 X 6000 mm SN 4   | kos | 305,75  | 3830045460920 |
| 34811 | PE KANAL. CEV 500/433 X 6000 mm SN 4   | kos | 381,15  | 3830045460937 |
| 34813 | PE KANAL. CEV 630/535 X 6000 mm SN 4   | kos | ponudba | 3830045460944 |
| 34815 | PE KANAL. CEV 800/678 X 6000 mm SN 4   | kos | ponudba | 3830045460951 |
| 34817 | PE KANAL. CEV 1000/852 X 6000 mm SN 4  | kos | ponudba | 3830045460968 |
| 34819 | PE KANAL. CEV 1200/1030 X 6000 mm SN 4 | kos | ponudba | 3830045460975 |

|       |  |     |         |               |
|-------|--|-----|---------|---------------|
| 34835 | PE KANAL. CEV 250/218 X 6000 mm SN 8   | kos | 133,43  | 3830045460982 |
| 34837 | PE KANAL. CEV 315/272 X 6000 mm SN 8   | kos | 187,14  | 3830045460999 |
| 34839 | PE KANAL. CEV 400/347 X 6000 mm SN 8   | kos | 375,64  | 3830045461002 |
| 34841 | PE KANAL. CEV 500/433 X 6000 mm SN 8   | kos | 494,74  | 3830045461019 |
| 34843 | PE KANAL. CEV 630/535 X 6000 mm SN 8   | kos | ponudba | 3830045461026 |
| 34845 | PE KANAL. CEV 800/678 X 6000 mm SN 8   | kos | ponudba | 3830045461033 |
| 34847 | PE KANAL. CEV 1000/852 X 6000 mm SN 8  | kos | ponudba | 3830045461040 |
| 34849 | PE KANAL. CEV 1200/1030 X 6000 mm SN 8 | kos | ponudba | 3830045461057 |



#### 3.1 Tesnila in spojke za PE cevi STIKAN in MAPIKAN

| ŠIFRA | NAZIV BLAGA  | EM  | EUR/kos | EAN KODA      |
|-------|--------------|-----|---------|---------------|
| 34182 | TESNILO 110  | kos | 2,65    | 3831055701546 |
| 34183 | TESNILO 160  | kos | 2,65    | 3831055701553 |
| 34186 | TESNILO 200  | kos | 2,89    | 3831055701560 |
| 35850 | TESNILO 250  | kos | 4,67    | 3831055705957 |
| 35745 | TESNILO 315  | kos | 6,55    | 3830001033595 |
| 35854 | TESNILO 400  | kos | 7,42    | 3831055701447 |
| 35747 | TESNILO 500  | kos | 11,83   | 3830001033618 |
| 35748 | TESNILO 630  | kos | ponudba | 3830001033625 |
| 34866 | TESNILO 800  | kos | ponudba | 3830045466021 |
| 34903 | TESNILO 1000 | kos | ponudba | 3830045466038 |
| 35751 | TESNILO 1200 | kos | ponudba | 3830001033656 |

|       |            |     |       |               |
|-------|------------|-----|-------|---------------|
| 34210 | SPOJKA 110 | kos | 1,88  | 3831055709191 |
| 34213 | SPOJKA 160 | kos | 5,22  | 3831055707616 |
| 34215 | SPOJKA 200 | kos | 5,51  | 3830021998584 |
| 35840 | SPOJKA 250 | kos | 12,91 | 3831055704417 |
| 35724 | SPOJKA 315 | kos | 20,51 | 3830001033489 |

| ŠIFRA | NAZIV BLAGA | EM  | EUR/kos      | EAN KODA      |
|-------|-------------|-----|--------------|---------------|
| 35844 | SPOJKA 400  | kos | <b>28,62</b> | 3831055701430 |
| 35728 | SPOJKA 500  | kos | <b>51,20</b> | 3830001033502 |
| 34888 | SPOJKA 630  | kos | ponudba      | 3830045465994 |
| 34867 | SPOJKA 800  | kos | ponudba      | 3830045466007 |
| 34891 | SPOJKA 1000 | kos | ponudba      | 3830045466014 |
| 35736 | SPOJKA 1200 | kos | ponudba      | 3830001033540 |

### 3.2 PP cevi za ulično kanalizacijo GIGAPIPE SN-8

|       |                     |                |     |                 |               |
|-------|---------------------|----------------|-----|-----------------|---------------|
| 71499 | PP DVOSL. REBR. CEV | 200/228 SN-8   | kos | <b>111,15</b>   | 3830045465482 |
| 71497 | PP DVOSL. REBR. CEV | 250/292 SN-8   | kos | <b>150,73</b>   | 3830045465550 |
| 71498 | PP DVOSL. REBR. CEV | 300/345 SN-8   | kos | <b>248,65</b>   | 3830045465499 |
| 71501 | PP DVOSL. REBR. CEV | 400/461 SN-8   | kos | <b>421,96</b>   | 3830045465505 |
| 71500 | PP DVOSL. REBR. CEV | 500/580 SN-8   | kos | <b>646,05</b>   | 3830045465512 |
| 71502 | PP DVOSL. REBR. CEV | 600/695 SN-8   | kos | <b>855,65</b>   | 3830045465529 |
| 71503 | PP DVOSL. REBR. CEV | 800/928 SN-8   | kos | <b>1.470,69</b> | 3830045465536 |
| 71504 | PP DVOSL. REBR. CEV | 1000/1168 SN-8 | kos | <b>2.326,34</b> | 3830045465543 |



|       |                         |           |     |               |               |
|-------|-------------------------|-----------|-----|---------------|---------------|
| 71515 | TESNILO ZA PP REBR. CEV | 200 SN-8  | kos | <b>2,61</b>   | 3830001030075 |
| 71525 | TESNILO ZA PP REBR. CEV | 250 SN-8  | kos | <b>4,15</b>   | 3830001033953 |
| 71526 | TESNILO ZA PP REBR. CEV | 300 SN-8  | kos | <b>5,95</b>   | 3830001033960 |
| 71528 | TESNILO ZA PP REBR. CEV | 400 SN-8  | kos | <b>14,50</b>  | 3830001033984 |
| 71522 | TESNILO ZA PP REBR. CEV | 500 SN-8  | kos | <b>34,05</b>  | 3830001034004 |
| 71521 | TESNILO ZA PP REBR. CEV | 600 SN-8  | kos | <b>46,13</b>  | 3830001034028 |
| 71530 | TESNILO ZA PP REBR. CEV | 800 SN-8  | kos | <b>89,30</b>  | 3830001034042 |
| 71533 | TESNILO ZA PP REBR. CEV | 1000 SN-8 | kos | <b>154,18</b> | 3830001034066 |

|       |                        |      |     |               |               |
|-------|------------------------|------|-----|---------------|---------------|
| 71527 | SPOJKA ZA PP REBR. CEV | 200  | kos | <b>52,93</b>  | 3830001030068 |
| 71516 | SPOJKA ZA PP REBR. CEV | 250  | kos | <b>65,70</b>  | 3830001034080 |
| 71517 | SPOJKA ZA PP REBR. CEV | 300  | kos | <b>68,00</b>  | 3830001034097 |
| 71518 | SPOJKA ZA PP REBR. CEV | 400  | kos | <b>73,00</b>  | 3830001034103 |
| 71519 | SPOJKA ZA PP REBR. CEV | 500  | kos | <b>108,94</b> | 3830001034110 |
| 71520 | SPOJKA ZA PP REBR. CEV | 600  | kos | <b>170,36</b> | 3830001034127 |
| 71531 | SPOJKA ZA PP REBR. CEV | 800  | kos | <b>181,91</b> | 3830001034134 |
| 71529 | SPOJKA ZA PP REBR. CEV | 1000 | kos | <b>369,60</b> | 3830001034141 |

### 03.3 PP cevi za ulično kanalizacijo TERAkansN-16

|       |                     |                 |     |                 |               |
|-------|---------------------|-----------------|-----|-----------------|---------------|
| 71485 | PP DVOSL. REBR. CEV | 200/228 SN-16   | kos | <b>197,01</b>   | 3830045465567 |
| 71487 | PP DVOSL. REBR. CEV | 250/292 SN-16   | kos | <b>228,79</b>   | 3830045465574 |
| 71488 | PP DVOSL. REBR. CEV | 300/345 SN-16   | kos | <b>351,85</b>   | 3830045465581 |
| 71491 | PP DVOSL. REBR. CEV | 400/461 SN-16   | kos | <b>587,26</b>   | 3830045465598 |
| 71490 | PP DVOSL. REBR. CEV | 500/580 SN-16   | kos | <b>948,54</b>   | 3830045465604 |
| 71492 | PP DVOSL. REBR. CEV | 600/695 SN-16   | kos | <b>1.351,78</b> | 3830045465611 |
| 71493 | PP DVOSL. REBR. CEV | 800/928 SN-16   | kos | <b>2.216,55</b> | 3830045465628 |
| 71494 | PP DVOSL. REBR. CEV | 1000/1168 SN-16 | kos | <b>3.523,12</b> | 3830045465635 |



## 4 PVC-PP TK IN ELEKTRO CEVI S PRIBOROM

| ŠIFRA | NAZIV BLAGA                  | EM  | EUR/kos | EAN KODA      |
|-------|------------------------------|-----|---------|---------------|
| 34100 | PVC TK CEV 110 X 6000 mm 3,2 | kos | 27,96   | 3831008550016 |
| 34102 | PVC TK CEV 125 X 6000 mm 2,5 | kos | 26,70   | 3831008555011 |
| 34106 | PVC TK CEV 125 X 6000 mm 3,7 | kos | 39,05   | 3831055701652 |

|       |                              |     |       |               |
|-------|------------------------------|-----|-------|---------------|
| 34110 | PVC EL CEV 110 X 6000 mm 3,2 | kos | 27,96 | 3831008560015 |
| 34111 | PVC EL CEV 110 X 6000 mm 2,2 | kos | 20,49 | 3830045461408 |
| 34114 | PVC EL CEV 110 X 6000 mm 2,7 | kos | 24,22 | 3831008508017 |
| 34112 | PVC EL CEV 125 X 6000 mm 2,5 | kos | 26,70 | 3831008565010 |
| 34113 | PVC EL CEV 125 X 6000 mm 3,7 | kos | 34,29 | 3831055701676 |
| 34120 | PVC EL CEV 160 X 6000 mm 3,2 | kos | 43,40 | 3831008569018 |

|       |                         |     |      |               |
|-------|-------------------------|-----|------|---------------|
| 34315 | DISTANČNIK ZA CEV 110/4 | kos | 1,54 | 3830045462238 |
| 34320 | DISTANČNIK ZA CEV 125/4 | kos | 2,57 | 3830045463860 |

|       |   |     |      |               |
|-------|---|-----|------|---------------|
| 34330 | UVODNICA 110 X 500 mm                     | kos | 4,25 | 3831008559026 |
| 34340 | UVODNICA 110 X 500 mm trobenta            | kos | 7,63 | 3831008558005 |
| 34331 | UVODNICA 125 X 500 mm trobenta            | kos | 8,91 | 3830045465765 |
| 34336 | UVODNICA 160 X 500 mm trobenta razširjena | kos | 9,92 | 3831008568011 |

|       |                   |     |      |               |
|-------|-------------------|-----|------|---------------|
| 34345 | ČEP ZA TK CEV 110 | kos | 1,19 | 3830045465772 |
|-------|-------------------|-----|------|---------------|

|       |                        |    |      |               |
|-------|------------------------|----|------|---------------|
| 34400 | OPOZORILNI TRAKTELEKOM | kg | 6,03 | 3830045461989 |
| 34405 | OPOZORILNI TRAK EL     | kg | 5,24 | 3830045461972 |
| 34435 | OPOZORILNI TRAK KRS    | kg | 6,03 | 3830045461996 |



## 4.1 PEHDSTIGMAFLEX CEVI S PRIBOROM-EL.,TK.,UK.

| ŠIFRA | NAZIV BLAGA                | EM | EUR/kos | EAN KODA      |
|-------|----------------------------|----|---------|---------------|
| 34602 | Dvoslojna rebrasta cev 40  | tm | 1,21    | 3830021992247 |
| 34604 | Dvoslojna rebrasta cev 50  | tm | 1,40    | 3830021992261 |
| 34606 | Dvoslojna rebrasta cev 63  | tm | 1,88    | 3830021992285 |
| 34608 | Dvoslojna rebrasta cev 75  | tm | 2,12    | 3830021992308 |
| 34610 | Dvoslojna rebrasta cev 90  | tm | 2,66    | 3830021992322 |
| 34612 | Dvoslojna rebrasta cev 110 | tm | 3,36    | 3830021992346 |
| 34611 | Dvoslojna rebrasta cev 125 | tm | 3,88    | 3830021992353 |
| 34613 | Dvoslojna rebrasta cev 160 | tm | 6,36    | 3830021992360 |
| 34615 | Dvoslojna rebrasta cev 200 | tm | 11,36   | 3830021992032 |

|       |                                    |     |       |               |
|-------|------------------------------------|-----|-------|---------------|
| 34141 | Stigmaflex cev KOEX.EL, 110 x 6000 | kos | 19,24 | 3831055709481 |
| 34149 | Stigmaflex cev KOEX.EL, 125 x 6000 | kos | 26,93 | 3831055701034 |
| 34144 | Stigmaflex cev KOEX.EL, 160 x 6000 | kos | 38,22 | 3831055709504 |
| 34137 | Stigmaflex cev KOEX.EL, 200 x 6000 | kos | 62,96 | 3831055700570 |



| ŠIFRA | NAZIV BLAGA                   | EM  | EUR/kos     | EAN KODA      |
|-------|-------------------------------|-----|-------------|---------------|
| 34182 | TESNILO ZA STIGMAFLEX CEV 110 | kos | <b>2,57</b> | 3831055701546 |
| 34183 | TESNILO ZA STIGMAFLEX CEV 160 | kos | <b>2,79</b> | 3831055701553 |
| 34186 | TESNILO ZA STIGMAFLEX CEV 200 | kos | <b>6,03</b> | 3831055701560 |



|       |                              |     |             |               |
|-------|------------------------------|-----|-------------|---------------|
| 34204 | SPOJKA ZA STIGMAFLEX CEV 40  | kos | <b>0,93</b> | 3830021998508 |
| 34209 | SPOJKA ZA STIGMAFLEX CEV 50  | kos | <b>1,25</b> | 3830021998515 |
| 34206 | SPOJKA ZA STIGMAFLEX CEV 63  | kos | <b>1,53</b> | 3830021998522 |
| 34207 | SPOJKA ZA STIGMAFLEX CEV 75  | kos | <b>1,70</b> | 3830021998539 |
| 34208 | SPOJKA ZA STIGMAFLEX CEV 90  | kos | <b>1,80</b> | 3830021998546 |
| 34210 | SPOJKA ZA STIGMAFLEX CEV 110 | kos | <b>1,82</b> | 3831055709191 |
| 34211 | SPOJKA ZA STIGMAFLEX CEV 125 | kos | <b>2,73</b> | 3830021998560 |
| 34213 | SPOJKA ZA STIGMAFLEX CEV 160 | kos | <b>5,07</b> | 3831055707616 |
| 34215 | SPOJKA ZA STIGMAFLEX CEV 200 | kos | <b>8,58</b> | 3830021998584 |



## 5 ALKATENCEVI 12,5 BAR

| ŠIFRA | NAZIV BLAGA              | EM | EUR/kos      | EAN KODA      |
|-------|--------------------------|----|--------------|---------------|
| 25105 | ALKATEN CEV 20 12,5 BAR  | tm | <b>0,80</b>  | 3830021990014 |
| 25110 | ALKATEN CEV 25 12,5 BAR  | tm | <b>1,17</b>  | 3830021990038 |
| 25115 | ALKATEN CEV 32 12,5 BAR  | tm | <b>1,85</b>  | 3830021990052 |
| 25120 | ALKATEN CEV 40 12,5 BAR  | tm | <b>2,86</b>  | 3830021990076 |
| 25125 | ALKATEN CEV 50 12,5 BAR  | tm | <b>4,36</b>  | 3830021990090 |
| 25130 | ALKATEN CEV 63 12,5 BAR  | tm | <b>6,79</b>  | 3830021990113 |
| 25135 | ALKATEN CEV 75 12,5 BAR  | tm | <b>9,50</b>  | 3830021990137 |
| 25140 | ALKATEN CEV 90 12,5 BAR  | tm | <b>13,81</b> | 3830021990151 |
| 25145 | ALKATEN CEV 110 12,5 BAR | tm | <b>20,45</b> | 3830045461897 |



## 6 SPOJNI KOSI ZA ALKATENCEVI

| ŠIFRA | NAZIV BLAGA                  | EM  | EUR/kos      | EAN KODA      |
|-------|------------------------------|-----|--------------|---------------|
| 26210 | ALKATEN SPOJKA ENOJNA 20 ZMP | kos | <b>2,26</b>  | 3830045468100 |
| 26211 | ALKATEN SPOJKA ENOJNA 25 ZMP | kos | <b>2,60</b>  | 3830045468117 |
| 26212 | ALKATEN SPOJKA ENOJNA 32 ZMP | kos | <b>3,38</b>  | 3830045468179 |
| 26290 | ALKATEN SPOJKA ENOJNA 40 ZMP | kos | <b>6,19</b>  | 3830045469336 |
| 26291 | ALKATEN SPOJKA ENOJNA 50 ZMP | kos | <b>8,09</b>  | 3830045469343 |
| 26214 | ALKATEN SPOJKA ENOJNA 63 ZMP | kos | <b>11,57</b> | 3830045469350 |



|       |                              |     |              |               |
|-------|------------------------------|-----|--------------|---------------|
| 26215 | ALKATEN SPOJKA ENOJNA 20 ZFP | kos | <b>2,49</b>  | 3830045468124 |
| 26216 | ALKATEN SPOJKA ENOJNA 25 ZFP | kos | <b>2,90</b>  | 3830045469367 |
| 26217 | ALKATEN SPOJKA ENOJNA 32 ZFP | kos | <b>4,18</b>  | 3830045469374 |
| 26292 | ALKATEN SPOJKA ENOJNA 40 ZFP | kos | <b>6,49</b>  | 3830045469381 |
| 26293 | ALKATEN SPOJKA ENOJNA 50 ZFP | kos | <b>8,61</b>  | 3830045469398 |
| 26294 | ALKATEN SPOJKA ENOJNA 63 ZFP | kos | <b>12,17</b> | 3830045469404 |



| ŠIFRA | NAZIV BLAGA                  | EM  | EUR/kos      | EAN KODA      |
|-------|------------------------------|-----|--------------|---------------|
| 26205 | ALKATEN SPOJKA DVOJNA 20 ZBP | kos | <b>3,99</b>  | 3830045468094 |
| 26206 | ALKATEN SPOJKA DVOJNA 25 ZBP | kos | <b>4,75</b>  | 3830045468162 |
| 26207 | ALKATEN SPOJKA DVOJNA 32 ZBP | kos | <b>6,19</b>  | 3830045469015 |
| 26208 | ALKATEN SPOJKA DVOJNA 40 ZBP | kos | <b>9,98</b>  | 3830045469022 |
| 26234 | ALKATEN SPOJKA DVOJNA 50 ZBP | kos | <b>13,65</b> | 3830045468186 |
| 26238 | ALKATEN SPOJKA DVOJNA 63 ZBP | kos | <b>18,83</b> | 3830045469039 |



|       |                       |     |              |               |
|-------|-----------------------|-----|--------------|---------------|
| 26219 | ALKATEN KOLENO 20 ZGP | kos | <b>3,99</b>  | 3830045468131 |
| 26220 | ALKATEN KOLENO 25 ZGP | kos | <b>4,88</b>  | 3830045469046 |
| 26221 | ALKATEN KOLENO 32 ZGP | kos | <b>6,08</b>  | 3830045469053 |
| 26218 | ALKATEN KOLENO 40 ZGP | kos | <b>10,49</b> | 3830045469060 |
| 26251 | ALKATEN KOLENO 50 ZGP | kos | <b>14,73</b> | 3830045469077 |
| 26222 | ALKATEN KOLENO 63 ZGP | kos | <b>17,85</b> | 3830045469084 |



|       |                        |     |              |               |
|-------|------------------------|-----|--------------|---------------|
| 26227 | ALKATEN KOLENO 20 ZGMP | kos | <b>2,60</b>  | 3830045468193 |
| 26228 | ALKATEN KOLENO 25 ZGMP | kos | <b>3,16</b>  | 3830045468209 |
| 26229 | ALKATEN KOLENO 32 ZGMP | kos | <b>4,10</b>  | 3830045469091 |
| 26252 | ALKATEN KOLENO 40 ZGMP | kos | <b>6,59</b>  | 3830045469107 |
| 26253 | ALKATEN KOLENO 50 ZGMP | kos | <b>9,11</b>  | 3830045469114 |
| 26230 | ALKATEN KOLENO 63 ZGMP | kos | <b>12,56</b> | 3830045469121 |



|       |                        |     |              |               |
|-------|------------------------|-----|--------------|---------------|
| 26231 | ALKATEN KOLENO 20 ZGFP | kos | <b>3,09</b>  | 3830045468216 |
| 26232 | ALKATEN KOLENO 25 ZGFP | kos | <b>3,69</b>  | 3830045469138 |
| 26233 | ALKATEN KOLENO 32 ZGFP | kos | <b>4,46</b>  | 3830045469145 |
| 26254 | ALKATEN KOLENO 40 ZGFP | kos | <b>8,69</b>  | 3830045469152 |
| 26255 | ALKATEN KOLENO 50 ZGFP | kos | <b>11,57</b> | 3830045469169 |
| 26256 | ALKATEN KOLENO 63 ZGFP | kos | <b>15,70</b> | 3830045469176 |



|       |                       |     |              |               |
|-------|-----------------------|-----|--------------|---------------|
| 26223 | ALKATENT - KOS 20 ZTP | kos | <b>5,18</b>  | 3830045469183 |
| 26224 | ALKATENT - KOS 25 ZTP | kos | <b>6,90</b>  | 3830045468148 |
| 26225 | ALKATENT - KOS 32 ZTP | kos | <b>8,90</b>  | 3830045468155 |
| 26257 | ALKATENT - KOS 40 ZTP | kos | <b>14,73</b> | 3830045469190 |
| 26258 | ALKATENT - KOS 50 ZTP | kos | <b>19,83</b> | 3830045469206 |
| 26259 | ALKATENT - KOS 63 ZTP | kos | <b>28,22</b> | 3830045469213 |



|       |                        |     |              |               |
|-------|------------------------|-----|--------------|---------------|
| 26262 | ALKATENT - KOS 25 ZTMP | kos | <b>5,72</b>  | 3830045469220 |
| 26263 | ALKATENT - KOS 32 ZTMP | kos | <b>7,12</b>  | 3830045469237 |
| 26264 | ALKATENT - KOS 40 ZTMP | kos | <b>12,51</b> | 3830045469244 |
| 26265 | ALKATENT - KOS 50 ZTMP | kos | <b>17,85</b> | 3830045469251 |
| 26266 | ALKATENT - KOS 63 ZTMP | kos | <b>34,51</b> | 3830045469268 |



|       |                        |     |              |               |
|-------|------------------------|-----|--------------|---------------|
| 26272 | ALKATENT - KOS 20 ZTFP | kos | <b>4,10</b>  | 3830045469275 |
| 26270 | ALKATENT - KOS 25 ZTFP | kos | <b>5,33</b>  | 3830045469282 |
| 26271 | ALKATENT - KOS 32 ZTFP | kos | <b>6,96</b>  | 3830045469299 |
| 26273 | ALKATENT - KOS 40 ZTFP | kos | <b>12,56</b> | 3830045469305 |
| 26274 | ALKATENT - KOS 50 ZTFP | kos | <b>16,83</b> | 3830045469312 |
| 26275 | ALKATENT - KOS 63 ZTFP | kos | <b>24,03</b> | 3830045469329 |



## 7 REBRASTE DRENAŽNE CEVI - PERFORIRANE IN NEPERFORIRANE

| ŠIFRA | NAZIV BLAGA    | EM | EUR/kos | EAN KODA      |
|-------|----------------|----|---------|---------------|
| 33050 | RDC MIDREN 50  | tm | 0,58    | 3831008545012 |
| 33065 | RDC MIDREN 65  | tm | 0,80    | 3831008545029 |
| 33080 | RDC MIDREN 80  | tm | 1,13    | 3831008545036 |
| 33100 | RDC MIDREN 100 | tm | 1,56    | 3831008545043 |
| 33125 | RDC MIDREN 125 | tm | 2,17    | 3831008545050 |
| 33160 | RDC MIDREN 160 | tm | 4,33    | 3830021991806 |
| 33200 | RDC MIDREN 200 | tm | 6,07    | 3830045465727 |

|       |               |     |      |               |
|-------|---------------|-----|------|---------------|
| 33270 | RDCSPOJKA 50  | kos | 0,78 | 3830021991998 |
| 33271 | RDCSPOJKA 65  | kos | 0,95 | 3830021991974 |
| 33272 | RDCSPOJKA 80  | kos | 1,20 | 3830021991981 |
| 33273 | RDCSPOJKA 100 | kos | 1,60 | 3830021992001 |
| 33274 | RDCSPOJKA 125 | kos | 2,16 | 3830021992025 |

|       |                      |     |       |               |
|-------|----------------------|-----|-------|---------------|
| 33252 | RDC KOLENO 80/90     | kos | 4,19  | 3831008543032 |
| 33243 | RDCT-KOS80/80/90     | kos | 5,57  | 3831008543131 |
| 33291 | RDCODCEP80/80/45     | kos | 5,57  | 3831008543230 |
| 33222 | RDCIZLIVNACEV80/1 m. | kos | 11,92 | 3831008543339 |

|       |                       |     |       |               |
|-------|-----------------------|-----|-------|---------------|
| 33253 | RDC KOLENO 100/90     | kos | 5,18  | 3831008543049 |
| 33242 | RDC T-KOS 100/100/90  | kos | 8,11  | 3831008543148 |
| 33288 | RDC ODCEP 100/100/45  | kos | 8,11  | 3831008543247 |
| 33223 | RDCIZLIVNACEV100/1 m. | kos | 15,32 | 3831008543346 |

## 8 DRENAŽNE CEVI - STIDREN, MAPIDREN (D, DD, DK)

|       |                   |           |     |        |               |
|-------|-------------------|-----------|-----|--------|---------------|
| 35205 | STIDRENDN 110     | l=6000 mm | kos | 33,60  | 3831057001323 |
| 35210 | STIDRENDN 160     | l=6000 mm | kos | 67,20  | 3831055701362 |
| 35215 | STIDRENDN 200     | l=6000 mm | kos | 112,60 | 3831055701393 |
| 35245 | STIDRENDN 250     | l=6000 mm | kos | 157,35 | 3831055701782 |
| 35238 | STIDRENDN 343/300 | l=6600 mm | kos | 290,06 | 3831055701645 |
| 35237 | STIDRENDN 400/350 | l=6000 mm | kos | 327,24 | 3831055701607 |



## 9 JUVIDUR CEVI

| ŠIFRA | NAZIV BLAGA                 | EM  | EUR/kos | EAN KODA      |
|-------|-----------------------------|-----|---------|---------------|
| 39002 | JUVIDURCEV 15X20 4 tm=1 kos | kos | 2,83    | 3830021995149 |
| 39004 | JUVIDURCEV 20X25            | kos | 3,70    | 3830021995163 |
| 39008 | JUVIDURCEV 22X27            | kos | 3,81    | 3830045461569 |
| 39010 | JUVIDURCEV 25X32            | kos | 5,91    | 3830021995187 |
| 39014 | JUVIDURCEV 28X32            | kos | 3,80    | 3830021995224 |



## 10 PP OBJEMKE

| ŠIFRA | NAZIV BLAGA    | EM  | EUR/kos | EAN KODA      |
|-------|----------------|-----|---------|---------------|
| 32732 | PP OBJEMKA 32  | kos | 1,85    | 3831037901599 |
| 32733 | PP OBJEMKA 40  | kos | 1,85    | 3831037901605 |
| 32734 | PP OBJEMKA 50  | kos | 1,85    | 3831037901612 |
| 32736 | PP OBJEMKA 75  | kos | 4,20    | 3831037901636 |
| 32738 | PP OBJEMKA 110 | kos | 7,00    | 3831037901650 |
| 32739 | PP OBJEMKA 125 | kos | 8,50    | 3831037901667 |



## 11 PVC JAŠKI

| ŠIFRA | NAZIV BLAGA          | EM  | EUR/kos | EAN KODA      |
|-------|----------------------|-----|---------|---------------|
| 36005 | JAŠEK Z DNOM 200x200 | kos | 6,75    | 3830045461453 |
| 36010 | JAŠEK Z DNOM 300x300 | kos | 14,56   | 3830045461460 |
| 36015 | JAŠEK Z DNOM 400x400 | kos | 26,61   | 3830045461477 |
| 36020 | JAŠEK Z DNOM 550x550 | kos | 52,54   | 3830045461484 |



|       |                         |     |        |               |
|-------|-------------------------|-----|--------|---------------|
| 36055 | JAŠEK Z REŠETKO 200x200 | kos | 11,27  | 3830021992568 |
| 36060 | JAŠEK Z REŠETKO 300x300 | kos | 22,71  | 3830021992582 |
| 36065 | JAŠEK Z REŠETKO 400x400 | kos | 40,57  | 3830021992605 |
| 36070 | JAŠEK Z REŠETKO 550x550 | kos | 100,10 | 3830021992629 |

|       |                            |     |        |               |
|-------|----------------------------|-----|--------|---------------|
| 36105 | JAŠEK S POKROVOM 200 x 200 | kos | 11,27  | 3830021992643 |
| 36110 | JAŠEK S POKROVOM 300 x 300 | kos | 22,71  | 3830021992667 |
| 16115 | JAŠEK S POKROVOM 400 x 400 | kos | 40,57  | 3830021992681 |
| 36120 | JAŠEK S POKROVOM 550 x 550 | kos | 100,10 | 3830021992704 |

|       |                                |     |       |               |
|-------|--------------------------------|-----|-------|---------------|
| 36230 | OKVIR S POKROVOM BTC 200 x 200 | kos | 8,32  | 3830021992889 |
| 36235 | OKVIR S POKROVOM BTC 300 x 300 | kos | 15,11 | 3830021992902 |
| 36240 | OKVIR S POKROVOM BTC 400 x 400 | kos | 24,68 | 3830021992926 |
| 36245 | OKVIR S POKROVOM BTC 550 x 550 | kos | 64,54 | 3830021992940 |

|       |                               |     |       |               |
|-------|-------------------------------|-----|-------|---------------|
| 36205 | OKVIR Z REŠETKO BTG 200 x 200 | kos | 8,32  | 3830021992803 |
| 26210 | OKVIR Z REŠETKO BTG 300 x 300 | kos | 15,11 | 3830021992827 |
| 36215 | OKVIR Z REŠETKO BTG 400 x 400 | kos | 24,68 | 3830021992841 |
| 36220 | OKVIR Z REŠETKO BTG 550 x 550 | kos | 64,54 | 3830021992865 |



|       |                  |     |       |               |
|-------|------------------|-----|-------|---------------|
| 36305 | POKROV 200 x 200 | kos | 4,52  | 3830021993381 |
| 36310 | POKROV 300 x 300 | kos | 8,16  | 3830021993404 |
| 36315 | POKROV 400 x 400 | kos | 13,97 | 3830021993428 |
| 36320 | POKROV 550 x 550 | kos | 48,07 | 3830021993442 |



|       |                 |     |       |               |
|-------|-----------------|-----|-------|---------------|
| 36330 | REŠETKA 200x200 | kos | 4,52  | 3830021993466 |
| 36335 | REŠETKA 300x300 | kos | 8,16  | 3830021993480 |
| 36340 | REŠETKA 400x400 | kos | 13,97 | 3830021993503 |
| 36345 | REŠETKA 550x550 | kos | 48,07 | 3830045465697 |





| ŠIFRA | NAZIV BLAGA   | EM  | EUR/kos      | EAN KODA      |
|-------|---------------|-----|--------------|---------------|
| 36360 | OKVIR 200x200 | kos | <b>3,79</b>  | 3830021993527 |
| 36365 | OKVIR 300x300 | kos | <b>6,96</b>  | 3830021993541 |
| 36370 | OKVIR 400x400 | kos | <b>10,71</b> | 3830021993565 |
| 36375 | OKVIR 550x550 | kos | <b>16,46</b> | 3830021993589 |



|       |                          |     |               |               |
|-------|--------------------------|-----|---------------|---------------|
| 36405 | PROTIPOVRATNI VENTIL 110 | kos | <b>85,50</b>  | 3830021993282 |
| 36410 | PROTIPOVRATNI VENTIL 125 | kos | <b>103,50</b> | 3830021993343 |
| 36415 | PROTIPOVRATNI VENTIL 160 | kos | <b>106,89</b> | 3830021993305 |
| 36420 | PROTIPOVRATNI VENTIL 200 | kos | <b>174,67</b> | 3830045462443 |



|       |                                 |     |              |               |
|-------|---------------------------------|-----|--------------|---------------|
| 36440 | TALNI SIFON CHS 11 150 X 150 -V | kos | <b>6,87</b>  | 3830001520064 |
| 36445 | TALNI SIFON CHS 12 200 X 200 -V | kos | <b>11,84</b> | 3830001520088 |
| 36442 | TALNI SIFON MIGNONCHM 10-100    | kos | <b>9,08</b>  | 3830021993169 |
| 36443 | TALNI SIFON MIGNONCHM 11-150    | kos | <b>11,05</b> | 3830021993176 |
| 32721 | TALNI SIFON 1/1                 | kos | <b>10,13</b> | 3830008230010 |
| 32720 | TALNI SIFON 2/2                 | kos | <b>12,36</b> | 3830008230065 |
| 32723 | TALNI SIFON Z VRTLJIVIM KOLENOM | kos | <b>15,70</b> | 3830021992544 |



|       |                                      |     |              |               |
|-------|--------------------------------------|-----|--------------|---------------|
| 36454 | PESK. ZA ŽLEB MINI PPV 11 FI 100/100 | kos | <b>10,80</b> | 3830021993367 |
| 36467 | PESK. ZA ŽLEB MAXI PPM 12 FI 100/100 | kos | <b>19,40</b> | 3830021993268 |
| 36466 | PESK. ZA ŽLEB MAXI PPM 11 FI 100/125 | kos | <b>19,40</b> | 3830021993244 |
| 36465 | PESK. ZA ŽLEB MAXI PPM 10 FI 125/125 | kos | <b>19,40</b> | 3830021993206 |



# GRIDIRON®

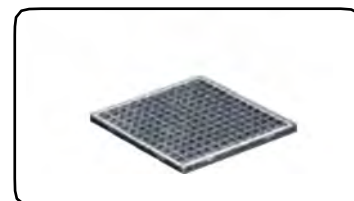
GRIGLIATI TECNICI

## GRIDIRON PROGRAM:

- **Rešetke Zn**
- **Pokrovi**
- **Svetlobni jaški**
- **Kanali**

KER JE VSAKA KAPLJA POMEMBNA

## REŠETKE ZN



### 1 REŠETKE ZA PREDPRAŽNIKE

| ŠIFRA | Naziv blaga                          | Dimenzije v mm | EUR/kos | EAN KODA      |
|-------|--------------------------------------|----------------|---------|---------------|
| 97024 | ANTITACCO prešana rešetka z okvirjem | 400 X 600 X 30 | 76,47   | 3830045468742 |

|       |                                     |                |       |               |
|-------|-------------------------------------|----------------|-------|---------------|
| 96983 | STANDARD prešana rešetka z okvirjem | 400 X 600 X 30 | 51,62 | 3830045468674 |
| 97100 | STANDARD prešana rešetka z okvirjem | 300 X 500 X 30 | 38,55 | 3830045468803 |



### 2 REŠETKE Z OKVIRJEM

| ŠIFRA | Naziv blaga                      | Dimenzije v mm  | EUR/kos | EAN KODA      |
|-------|----------------------------------|-----------------|---------|---------------|
| 97110 | WALKY varjena rešetka z okvirjem | 300 X 1000 X 30 | 59,80   | 3830045468810 |
| 97112 | WALKY varjena rešetka z okvirjem | 400 X 1000 X 30 | 69,90   | 3830045468827 |
| 97114 | WALKY varjena rešetka z okvirjem | 500 X 1000 X 30 | 79,70   | 3830045468834 |

|       |                                     |                 |       |               |
|-------|-------------------------------------|-----------------|-------|---------------|
| 97054 | STANDARD prešana rešetka z okvirjem | 160 X 1010 X 30 | 30,86 | 3830045468766 |
| 97058 | STANDARD prešana rešetka z okvirjem | 160 X 2010 X 30 | 58,28 | 3830045468773 |
| 97062 | STANDARD prešana rešetka z okvirjem | 220 X 1010 X 30 | 36,90 | 3830045468780 |
| 97066 | STANDARD prešana rešetka z okvirjem | 220 X 2010 X 30 | 72,30 | 3830045468797 |



### 3 REŠETKE ZA KANALE

| ŠIFRA | Naziv blaga                       | Dimenzije v mm  | EUR/kos | EAN KODA      |
|-------|-----------------------------------|-----------------|---------|---------------|
| 97608 | REŠETKA prešana - pocinkana - 100 | 100 X 1000 X 20 | 15,79   | 3830045461286 |
| 97646 | REŠETKA prešana - pocinkana - 150 | 150 X 1000 X 25 | 20,18   | 3830045461293 |
| 97659 | REŠETKA prešana - pocinkana - 210 | 210 X 1000 X 25 | 24,76   | 3830045465840 |

# POKROVI

## 1 POKROVI ZA NAPOLNIT - PLINOTESNI



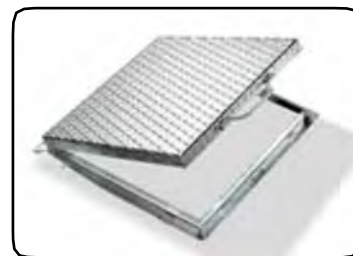
| ŠIFRA | Naziv blaga         | Dimenzije v mm | EUR/kos | EAN KODA      |
|-------|---------------------|----------------|---------|---------------|
| 95002 | STARpokrov-pocinkan | 350 X 350 X 85 | 35,39   | 3830045468346 |
| 95004 | STARpokrov-pocinkan | 450 X 450 X 85 | 42,21   | 3830045468353 |
| 95006 | STARpokrov-pocinkan | 550 X 550 X 85 | 53,03   | 3830045468360 |
| 95008 | STARpokrov-pocinkan | 650 X 650 X 85 | 78,17   | 3830045468377 |



|       |                      |                |       |               |
|-------|----------------------|----------------|-------|---------------|
| 95012 | SLIM pokrov-pocinkan | 340 X 340 X 55 | 24,46 | 3830045468391 |
| 95014 | SLIM pokrov-pocinkan | 440 X 440 X 55 | 32,25 | 3830045468407 |
| 95016 | SLIM pokrov-pocinkan | 540 X 540 X 55 | 41,22 | 3830045468414 |
| 95018 | SLIM pokrov-pocinkan | 640 X 640 X 55 | 49,98 | 3830045468421 |

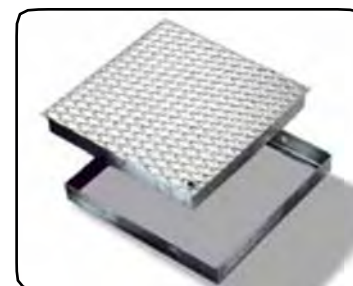


|       |                                     |                |        |               |
|-------|-------------------------------------|----------------|--------|---------------|
| 95082 | INOX oljni pokrov (debelina 1,5 mm) | 300 x 300 x 65 | 65,25  | 3830045468605 |
| 95084 | INOX oljni pokrov (debelina 1,5 mm) | 400 x 400 x 65 | 75,50  | 3830045468612 |
| 95086 | INOX oljni pokrov (debelina 1,5 mm) | 500 x 500 x 65 | 84,50  | 3830045468629 |
| 95088 | INOX oljni pokrov (debelina 1,5 mm) | 600 x 600 x 65 | 104,00 | 3830045468636 |
| 95104 | INOX oljni pokrov (debelina 2 mm)   | 700 x 700 x 65 | 126,88 | 3830045468822 |
| 95089 | INOX oljni pokrov (debelina 2 mm)   | 800 x 800 x 65 | 140,66 | 3830045462313 |



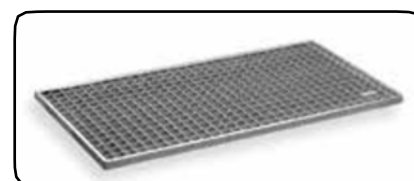
## 2 POKROVI IZ NAREBRIČENE PLOČEVINE-POCINKANI

| ŠIFRA | Naziv blaga                | Dimenzije v mm | EUR/kos | EAN KODA      |
|-------|----------------------------|----------------|---------|---------------|
| 95052 | CISTERNA pokrov - pocinkan | 430 X 430 X 35 | 52,49   | 3830045468490 |
| 95054 | CISTERNA pokrov - pocinkan | 530 X 530 X 35 | 70,07   | 3830045468506 |
| 95056 | CISTERNA pokrov - pocinkan | 630 X 630 X 35 | 96,17   | 3830045468513 |
| 95058 | CISTERNA pokrov - pocinkan | 730 X 730 X 35 | 122,47  | 3830045468520 |
| 95064 | CISTERNA pokrov - pocinkan | 530 X 730 X 35 | 104,41  | 3830045468544 |
| 95060 | CISTERNA pokrov - pocinkan | 830 X 830 X 35 | 157,75  | 3830045468537 |
| 95062 | CISTERNA pokrov - pocinkan | 930 X 930 X 35 | 223,19  | 3830045468551 |



|       |                         |                |        |               |
|-------|-------------------------|----------------|--------|---------------|
| 95072 | SHOPING pokrov-pocinkan | 450 X 450 X 50 | 52,89  | 3830045468568 |
| 95074 | SHOPING pokrov-pocinkan | 550 X 550 X 50 | 74,43  | 3830045468575 |
| 95076 | SHOPING pokrov-pocinkan | 650 X 650 X 50 | 102,28 | 3830045468582 |
| 95078 | SHOPING pokrov-pocinkan | 550 X 750 X 50 | 107,11 | 3830045468599 |

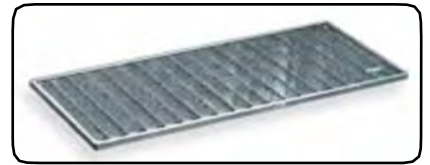
## SVETLOBNI JAŠKI



### 1 PREŠANE REŠETKE 20x2 33x33

| ŠIFRA | Naziv blaga | Dimenzije  | Tip rešetke  | EUR/kos | EAN KODA      |
|-------|-------------|------------|--------------|---------|---------------|
| 94300 | REŠETKA     | 430 x 800  | 20x2 - 33x33 | 59,10   | 3830021990403 |
| 94310 | REŠETKA     | 430 x 1000 | 20x2 - 33x33 | 68,34   | 3830021990410 |
| 94320 | REŠETKA     | 600 x 1000 | 20x2 - 33x33 | 82,75   | 3830021990427 |
| 94330 | REŠETKA     | 430 x 1250 | 20x2 - 33x33 | 75,47   | 3830021990479 |
| 94331 | REŠETKA     | 600 x 1250 | 20x2 - 33x33 | 96,30   | 3830045468865 |
| 94340 | REŠETKA     | 600 x 1500 | 20x2 - 33x33 | 123,46  | 3830021990434 |
| 94350 | REŠETKA     | 600 x 2000 | 20x2 - 33x33 | 151,35  | 3830021990441 |





## 2 PREŠANE REŠETKE - GOSTE 20x255x11

| ŠIFRA | Naziv blaga | Dimenzije  | Tip rešetke  | EUR/kos | EAN KODA      |
|-------|-------------|------------|--------------|---------|---------------|
| 94400 | REŠETKA     | 430 X 800  | 20x2 - 55X11 | 68,85   | 3830021990458 |
| 94410 | REŠETKA     | 430 X 1000 | 20x2 - 55X11 | 84,52   | 3830021990465 |
| 94420 | REŠETKA     | 600 X 1000 | 20x2 - 55X11 | 103,28  | 3830021990472 |

|       |         |            |              |        |               |
|-------|---------|------------|--------------|--------|---------------|
| 94430 | REŠETKA | 430 X 1250 | 20x2 - 55X11 | 93,79  | 3830021990489 |
| 94431 | REŠETKA | 600 X 1250 | 20x2 - 55X11 | 134,94 | 3830045468872 |
| 94432 | REŠETKA | 600 X 1500 | 20x2 - 55X11 | 153,17 | 3830021990496 |
| 94450 | REŠETKA | 600 X 2000 | 20x2 - 55X11 | 176,01 | 3830045461231 |



## 3 PODALJŠKI

| ŠIFRA | Naziv blaga | Dimenzije        | EUR/kos | EAN KODA      |
|-------|-------------|------------------|---------|---------------|
| 94200 | PODALJŠEK   | 800 x 350 x 430  | 75,70   | 3830045461200 |
| 94205 | PODALJŠEK   | 1000 x 350 x 430 | 77,39   | 3830045461262 |
| 94210 | PODALJŠEK   | 1000 x 350 x 600 | 115,77  | 3830045461279 |
| 94215 | PODALJŠEK   | 1250 x 350 x 430 | 98,72   | 3830021991486 |
| 94126 | PODALJŠEK   | 1250 x 350 x 600 | 136,72  | 3830045468889 |
| 94220 | PODALJŠEK   | 1500 x 350 x 600 | 234,40  | 3830045461217 |
| 94222 | PODALJŠEK   | 2000 x 350 x 600 | 395,67  | 3830045468896 |



## 4 SVETLOBNI JAŠKI

| ŠIFRA | Naziv blaga | Dimenzije         | Tip odtoka  | EUR/kos | EAN KODA      |
|-------|-------------|-------------------|-------------|---------|---------------|
| 94100 | SV. JAŠEK   | 800 x 650 x 430   | ODTOK STARI | 86,98   | 3830021990397 |
| 94105 | SV. JAŠEK   | 1000 x 650 x 430  | ODTOK STARI | 97,23   | 3830021990359 |
| 94135 | SV. JAŠEK   | 1000 x 800 x 430  | ODTOK STARI | 117,75  | 3830021990366 |
| 94115 | SV. JAŠEK   | 1000 x 1000 x 430 | ODTOK NOVI  | 135,00  | 3830021990328 |
| 94120 | SV. JAŠEK   | 1000 x 1000 x 600 | ODTOK STARI | 195,81  | 3830021990335 |

|       |           |                   |             |          |               |
|-------|-----------|-------------------|-------------|----------|---------------|
| 94125 | SV. JAŠEK | 1000 x 1300 x 430 | ODTOK NOVI  | 205,05   | 3830021990342 |
| 94130 | SV. JAŠEK | 1250 x 1000 x 430 | ODTOK NOVI  | 200,36   | 3830021991455 |
| 94131 | SV. JAŠEK | 1250 x 1000 x 600 | ODTOK NOVI  | 252,76   | 3830045468902 |
| 94132 | SV. JAŠEK | 1250 x 1300 x 600 | ODTOK NOVI  | 352,17   | 3830045468919 |
| 94138 | SV. JAŠEK | 1500 x 1200 x 600 | ODTOK STARI | 503,57   | 3830021990373 |
| 94140 | SV. JAŠEK | 2000 x 1200 x 600 | FILTER      | 1.491,54 | 3830021990380 |

## 5 NASTAVEK ZA ODTOK



| ŠIFRA | Naziv blaga              | EUR/kos | EAN KODA      |
|-------|--------------------------|---------|---------------|
| 94253 | ODTOK NOVI art. 4450B    | 19,665  | 3830021990199 |
| 94250 | ODTOK STARI art. 4450 SC | 19,665  | 3830021990519 |
| 94252 | FILTER SAMO ZA 4457S     | 16,605  | 3830045461224 |

## KANALI

### 1. KANALI Z REŠETKAMI NA MOST - EKONOMIČNI



#### 1.1 MALI KANALI SERIJA BAZA 127

| ŠIFRA | Naziv blaga                                | Nosilnost | Pal | Pretok | Š x D x V       | EUR/kos | EAN KODA      |
|-------|--|-----------|-----|--------|-----------------|---------|---------------|
| 97611 | KANAL betonski - 127 z reš. ZN             | A         | 40  | 100    | 127 X 1000 X 90 | 17,85   | 3830045468841 |
| 97610 | KANAL BAZA polimerični - 127 z reš. ZN     | A         | 96  | 100    | 127 X 1000 X 90 | 17,85   | 3830045461590 |
| 97612 | KANAL BAZA LOW polimerični - 127 z reš. ZN | A         | 104 | ZNIŽAN | 127 X 1000 X 60 | 15,99   | 3830045464218 |
| 97616 | KANAL BAZA polimerični - 127 z LTŽ reš.    | B 125     | 1   | 100    | 127 X 1000 X 90 | 42,90   | 3830045464041 |
| 97614 | KANAL BAZA polimerični - 127               |           | 1   | 100    | 127 X 1000 X 90 | 11,73   | 3830045461422 |

|       |                               |       |   |  |            |       |               |
|-------|-------------------------------|-------|---|--|------------|-------|---------------|
| 97620 | REŠETKA pločevinasta ZN - 127 | A     | 1 |  | 127 X 1000 | 8,09  | 3830045465642 |
| 97622 | REŠETKA inox - 127            | A     | 1 |  | 127 X 1000 | 43,90 | 3830045465659 |
| 97628 | REŠETKA LTŽ - 127             | B 125 | 1 |  | 127 X 500  | 15,25 | 3830045461439 |

|       |                                 |  |  |  |           |       |               |
|-------|---------------------------------|--|--|--|-----------|-------|---------------|
| 97618 | Sifonski jašek - 127            |  |  |  | 127 X 500 | 82,15 | 3830045465666 |
| 97630 | Čelnik - 127                    |  |  |  | 127 X 90  | 10,79 | 3830045465673 |
| 97632 | Čelnik z nastavkom - 127        |  |  |  | 127 X 90  | 22,73 | 3830045465680 |
| 97634 | Sidro za litoželezno reš. - 127 |  |  |  |           | 2,50  | 3830045461613 |



## 1.2 KANALI IZ VIBRIRANEGA BETONA SERIJA VIBRO-BASE

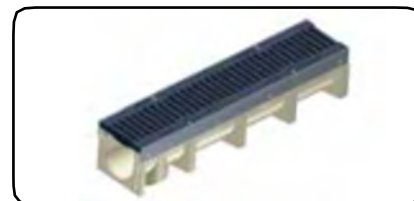
| ŠIFRA | Širina rešetke - lamela / okno v mm | Ime kanala in tip rešetke | Nosilnost | Pal | Pretok | Š x D x V        | EUR / kos | EAN KODA      |
|-------|-------------------------------------|---------------------------|-----------|-----|--------|------------------|-----------|---------------|
| 97802 | 150 --- debelina 1,2                | VIBRO-BASE 100 s PL reš.  | A         | 42  | 100    | 166 X 1000 X 140 | 36,00     | 3830045464096 |
| 97804 | 200 --- debelina 1,5                | VIBRO-BASE 150 s PL reš.  | A         | 25  | 150    | 216 X 1000 X 200 | 45,85     | 3830045464102 |
| 97806 | 150 --- 20 X 2 / 33 X 22            | VIBRO-BASE 100 s PR reš.  | A         | 42  | 100    | 166 X 1000 X 140 | 51,62     | 3830045464065 |
| 97807 | 200 --- 20 X 2 / 33 X 33            | VIBRO-BASE 150 s PR reš.  | A         | 25  | 150    | 216 X 1000 X 200 | 61,64     | 3830045464119 |
| 97808 | 250 --- 30 X 2 / 33 X 33            | VIBRO-BASE 200 s PR reš.  | A         | 16  | 200    | 266 X 1000 X 260 | 78,69     | 3830045464140 |
| 97809 | 150 --- 30 X 2 / 33 X 22            | VIBRO-BASE 100 s PR reš.  | B 125     | 42  | 100    | 166 X 1000 X 140 | 56,59     | 3830045464072 |
| 97810 | 200 --- 30 X 2 / 33 X 33            | VIBRO-BASE 150 s PR reš.  | B 125     | 25  | 150    | 216 X 1000 X 200 | 68,01     | 3830045464126 |
| 97811 | 250 --- 40 X 2 / 33 X 33            | VIBRO-BASE 200 s PR reš.  | B 125     | 16  | 200    | 266 X 1000 X 260 | 91,06     | 3830045464157 |
| 97816 | 150                                 | VIBRO-BASE 100 z LTŽ reš. | C 250     | 42  | 100    | 166 X 1000 X 140 | 74,05     | 3830045464089 |
| 97818 | 200                                 | VIBRO-BASE 150 z LTŽ reš. | C 250     | 25  | 150    | 216 X 1000 X 200 | 95,24     | 3830045464133 |
| 97820 | 250                                 | VIBRO-BASE 200 z LTŽ reš. | C 250     | 16  | 200    | 266 X 1000 X 260 | 135,86    | 3830045464164 |

## 2. KANALI ZA VELIKE OBREMITVE DO F 900



### 2.1 KANALI IZ VIBRIRANEGA BETONA SERIJA R

| ŠIFRA | Širina rešetke v mm - rob na kanalu | Ime kanala in tip rešetke | Nosilnost | Pal | Pretok | Š x D x V        | EUR / kos  | EAN KODA      |
|-------|-------------------------------------|---------------------------|-----------|-----|--------|------------------|------------|---------------|
| 97775 | 122 - pločevinast ZN                | R 122 z LTŽ reš.          | C 250     | 56  | 87     | 131 X 1000 X 102 | 73,90      | 3830045462405 |
| 97776 | 150 - pločevinast ZN                | R 150 z LTŽ reš.          | D 400     | 36  | 93     | 165 X 1000 X 160 | 88,90      | 3830045462412 |
| 97777 | 210 - pločevinast ZN                | R 210 z LTŽ reš.          | D 400     | 20  | 153    | 225 X 1000 X 212 | 118,00     | 3830045462429 |
| 97778 | 265 - pločevinast ZN                | R 265 z LTŽ reš.          | D 400     | 16  | 200    | 280 X 1000 X 272 | 139,90     | 3830045462436 |
| 97779 | 315 - pločevinast ZN                | R 315 z LTŽ reš.          | D 400     | 9   | 250    | 330 X 1000 X 315 | 219,00     | 3830045462432 |
| 97768 | 365 - pločevinast ZN                | R 365 z LTŽ reš.          | D 400     | 6   | 300    | 390 X 1000 X 385 | po ponudbi | 3830045466045 |
| 97771 | 495 - pločevinast ZN                | R 495 z LTŽ reš.          | D 400     | 4   | 400    | 525 X 1000 X 500 | po ponudbi | 3830045466090 |
| 97772 | 595 - pločevinast ZN                | R 595 z LTŽ reš.          | D 400     | 4   | 500    | 625 X 1000 X 600 | po ponudbi | 3830045466106 |



## 2.2 KANALI IZ POLIMERNEGA BETONA SERIJA POLY FLY

| ŠIFRA | Širina rešetke v mm - rob na kanalu | Ime kanala in tip rešetke   | Nosilnost | Pal | Pretok | Š x D x V        | EUR/kos       | EAN KODA      |
|-------|-------------------------------------|-----------------------------|-----------|-----|--------|------------------|---------------|---------------|
| 97765 | 145 - pločevinast ZN                | POLYFLY 100 z lit. reš.     | D 400     | 42  | 107    | 154 X 1000 X 141 | <b>88,90</b>  | 3830045466175 |
| 97766 | 145 - pločevinast ZN                | POLYFLY 100 LOW z lit. reš. | D 400     | 78  | ZNIŽAN | 154 X 1000 X 71  | <b>76,90</b>  | 3830045466137 |
| 97767 | 195 - pločevinast ZN                | POLYFLY 150 z lit. reš.     | D 400     | 35  | 157    | 204 X 1000 X 193 | <b>139,90</b> | 3830045466144 |
| 97768 | 195 - pločevinast ZN                | POLYFLY 150 LOW z lit. reš. | D 400     | 55  | ZNIŽAN | 204 X 1000 X 110 | <b>115,90</b> | 3830045466045 |
| 97769 | 260 - pločevinast ZN                | POLYFLY 200 z lit. reš.     | D 400     | 24  | 223    | 270 X 1000 X 255 | <b>184,90</b> | 3830045462290 |
| 97770 | 260 - pločevinast ZN                | POLYFLY 200 LOW z lit. reš. | D 400     | 32  | ZNIŽAN | 270 X 1000 X 110 | <b>149,90</b> | 3830045468926 |



## 2.3 KANALI IZ ARMIRANEGA BETONA SERIJA K

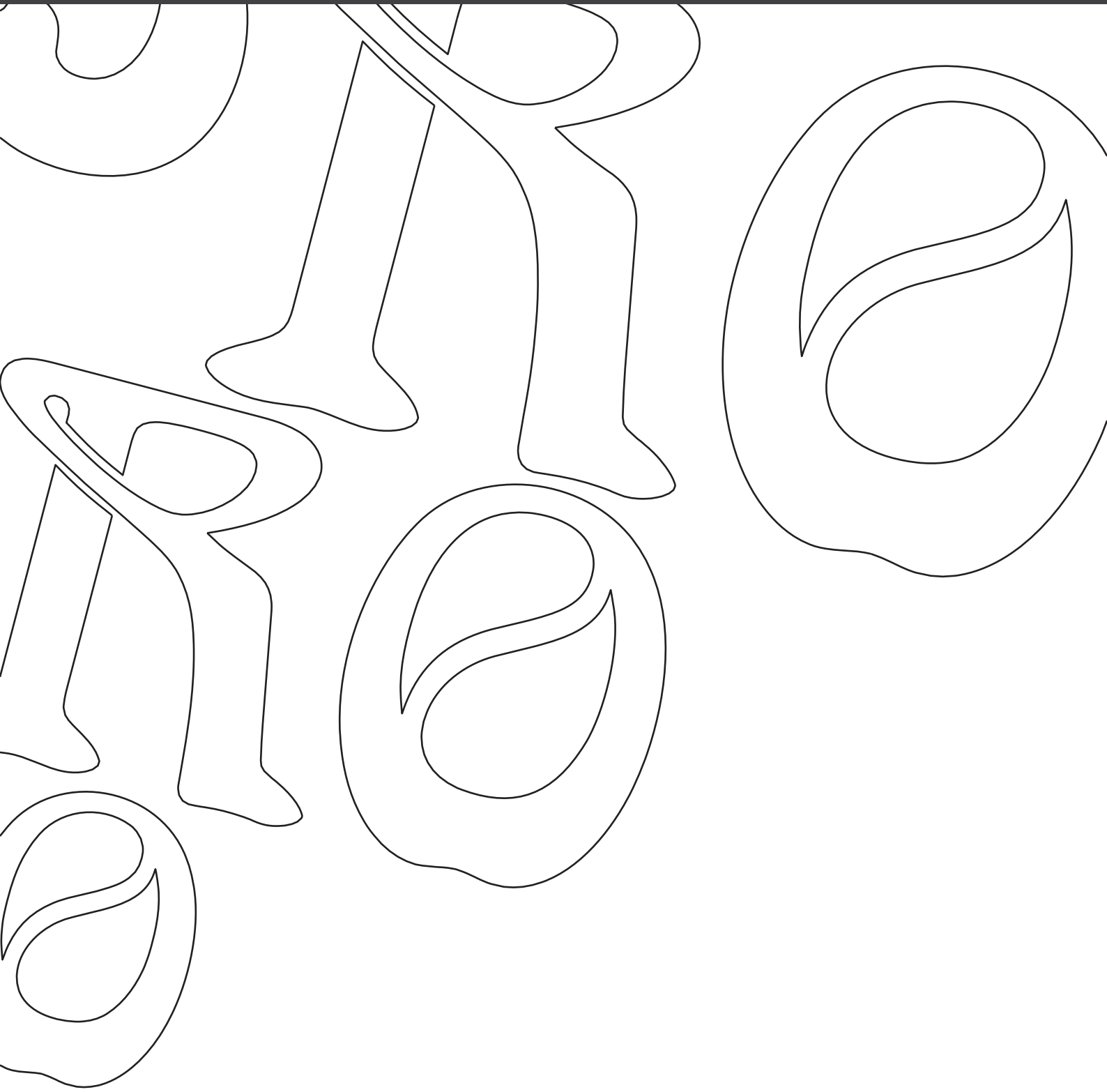
| ŠIFRA | Širina rešetke v mm - rob na kanalu | Ime kanala in tip rešetke | Nosilnost | Pal | Pretok | Š x D x V            | EUR/kos       | EAN KODA      |
|-------|-------------------------------------|---------------------------|-----------|-----|--------|----------------------|---------------|---------------|
| 97758 | 170 - litoželezen                   | K 170 z LTŽ reš.          | F 900     | 20  | 100    | 172/212 X 1000 X 226 | <b>152,49</b> | 3830045466052 |
| 97759 | 220 - litoželezen                   | K 220 z LTŽ reš.          | F 900     | 16  | 150    | 222/262 X 1000 X 256 | <b>199,38</b> | 3830045466069 |
| 97760 | 270 - litoželezen                   | K 270 z LTŽ reš.          | F 900     | 9   | 200    | 272/310 X 1000 X 311 | <b>268,49</b> | 3830045466076 |
| 97763 | 270 - litoželezen                   | K 270 z LTŽ reš.          | F 900     | 15  | ZNIŽAN | 272/300 X 1000 X 190 | <b>247,38</b> | 3830045466113 |
| 97761 | 350 - litoželezen                   | K 350 z LTŽ reš.          | F 900     | 9   | 263    | 350/440 X 1000 X 442 | <b>329,08</b> | 3830045466083 |



## 2.4 KANALI IZ POLIMERNEGA BETONA SERIJA CAST-BLOCKING

| ŠIFRA | Širina rešetke v mm - rob na kanalu | Ime kanala in tip rešetke | Nosilnost | Pal | Pretok | Š x D x V        | EUR/kos       | EAN KODA      |
|-------|-------------------------------------|---------------------------|-----------|-----|--------|------------------|---------------|---------------|
| 97250 | 150 - litoželezen                   | CAST-BLOCKING 150 z LTŽ   | F 900     | 30  | 95     | 160 X 1000 X 190 | <b>151,36</b> | 3830045465710 |
| 97260 | 200 - litoželezen                   | CAST-BLOCKING 200 z LTŽ   | F 900     | 20  | 150    | 210 X 1000 X 270 | <b>210,13</b> | 3830045461620 |
| 97269 | 250 - litoželezen                   | CAST-BLOCKING 250 z LTŽ   | F 900     | 9   | ZNIŽAN | 260 X 1000 X 130 | <b>262,98</b> | 3830045466168 |
| 97270 | 250 - litoželezen                   | CAST-BLOCKING 250 z LTŽ   | F 900     | 9   | 195    | 260 X 1000 X 300 | <b>273,26</b> | 3830045465901 |
| 97271 | 350 - litoželezen                   | CAST-BLOCKING 350 z LTŽ   | F 900     | 9   | 295    | 360 X 1000 X 365 | <b>344,60</b> | 3830045465703 |

Vsi artikli so dobavljivi po dogovoru - CENE SO BREZ DDV.



**ALPRO**

**ALPRO d.o.o.**

Jama 12,  
1234 Mengeš

E-mail: [info@alpro-menges.si](mailto:info@alpro-menges.si)

Tel.: +386 (1) 562 39 00

Fax.: +386 (1) 562 39 05